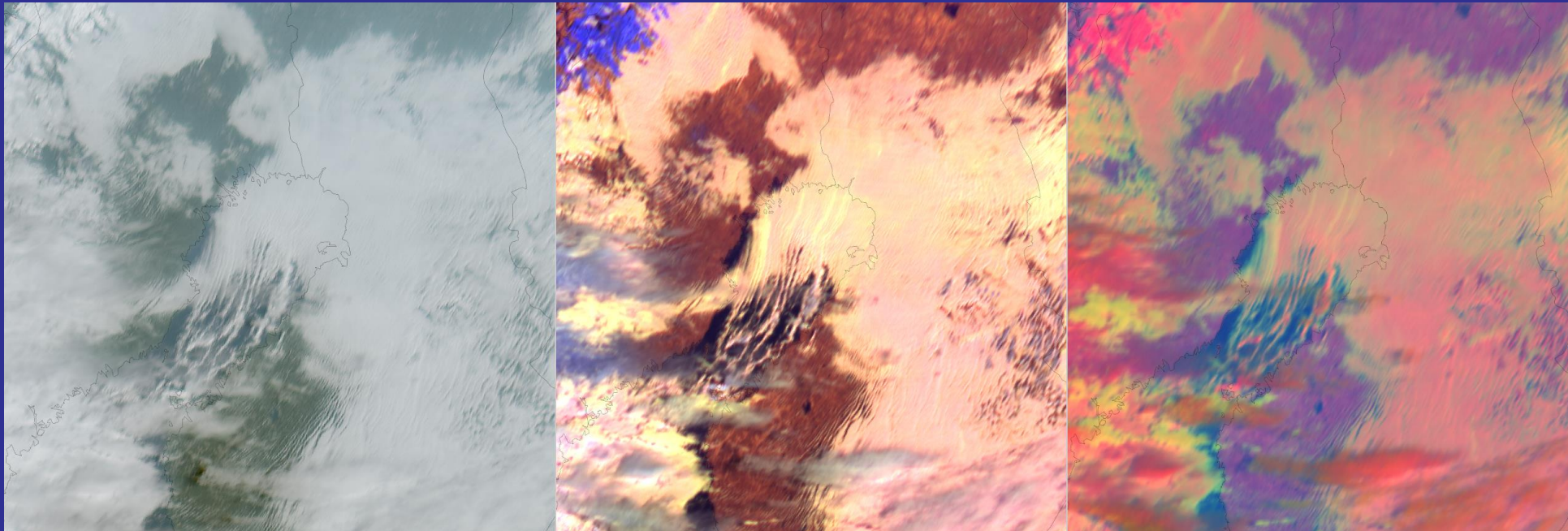


FCI examples from high latitudes



Petteri Pyykkö

8.10.2024

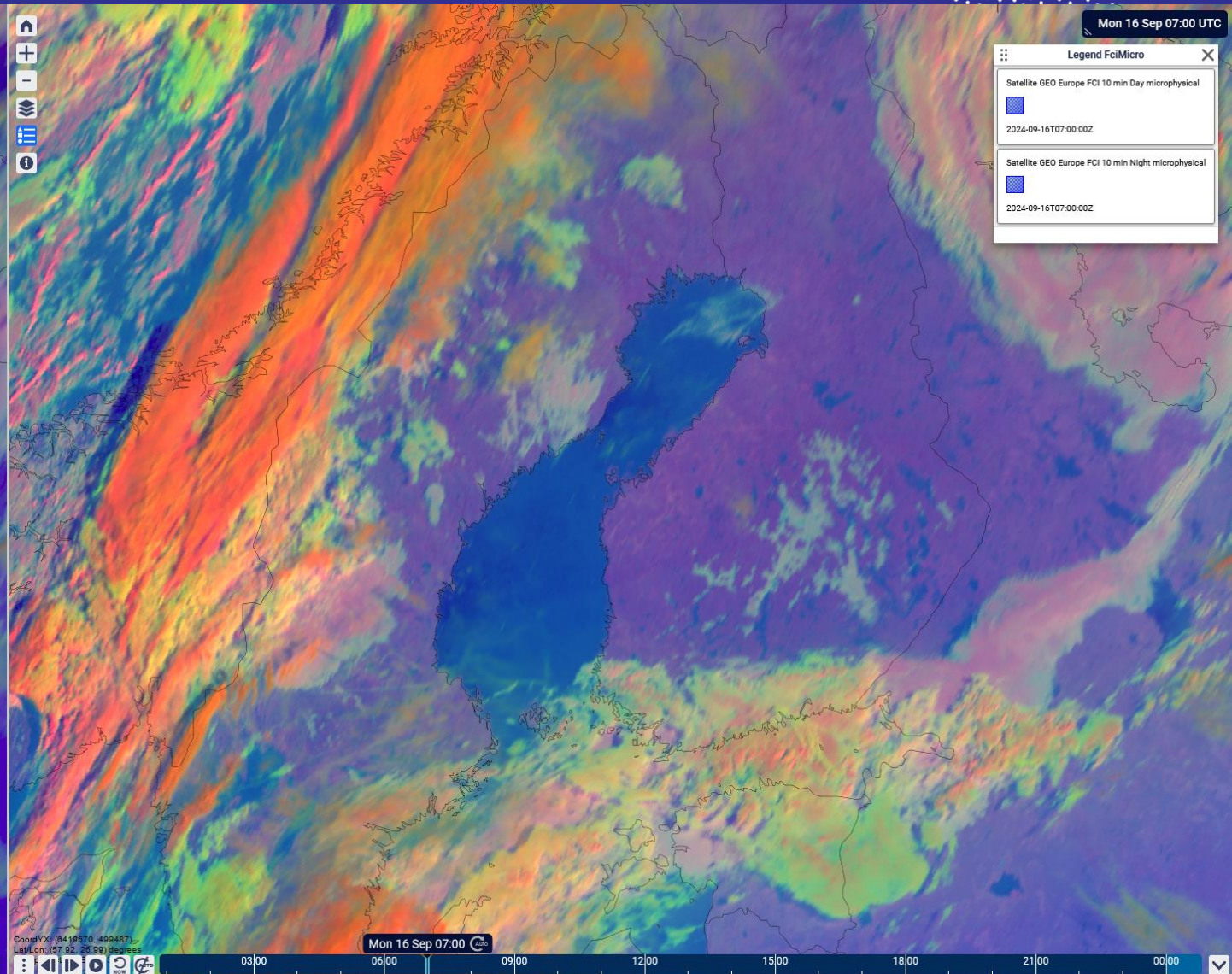
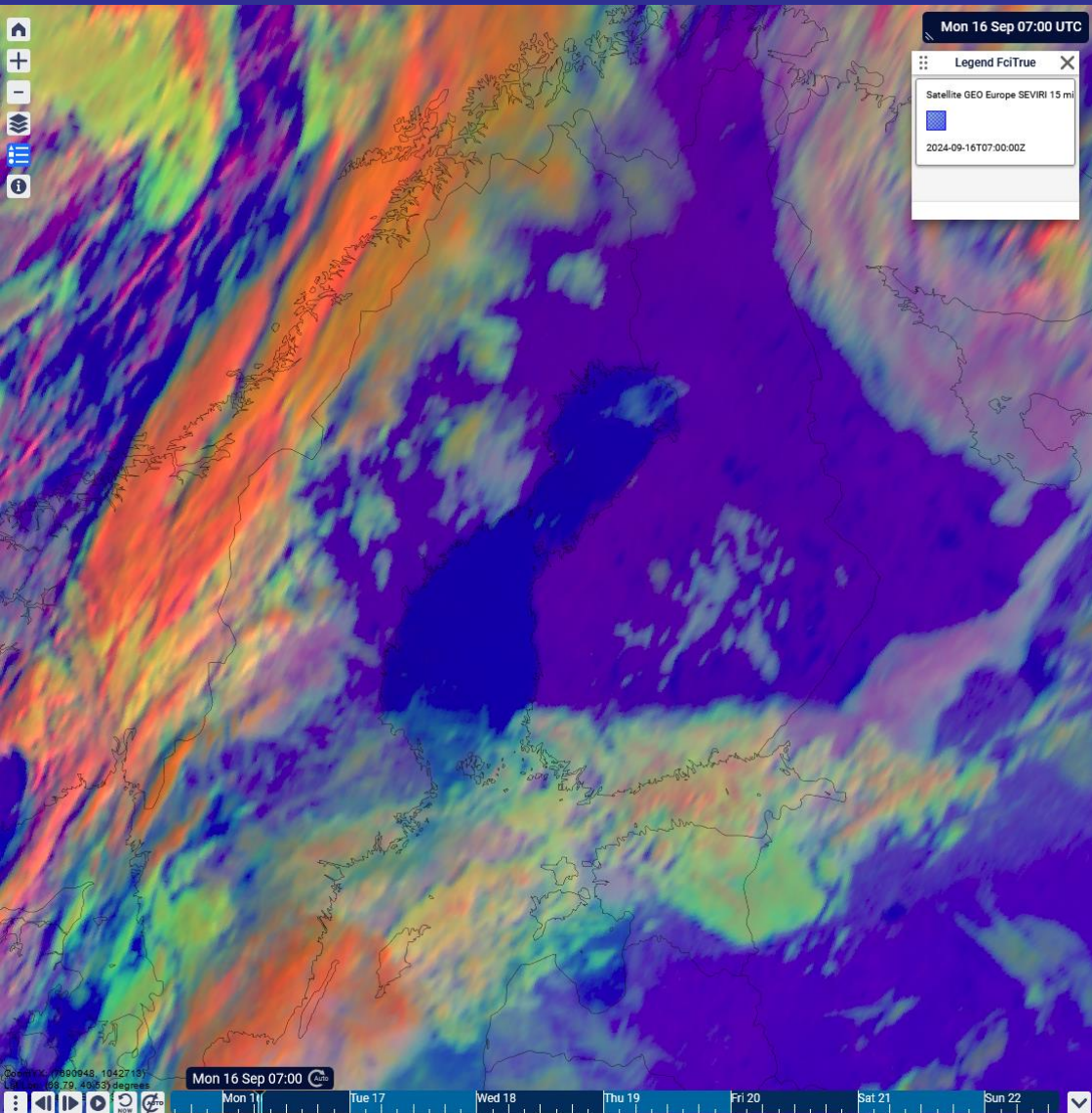
1



Fog in Central Finland – 16th September, 2024, 07 UTC

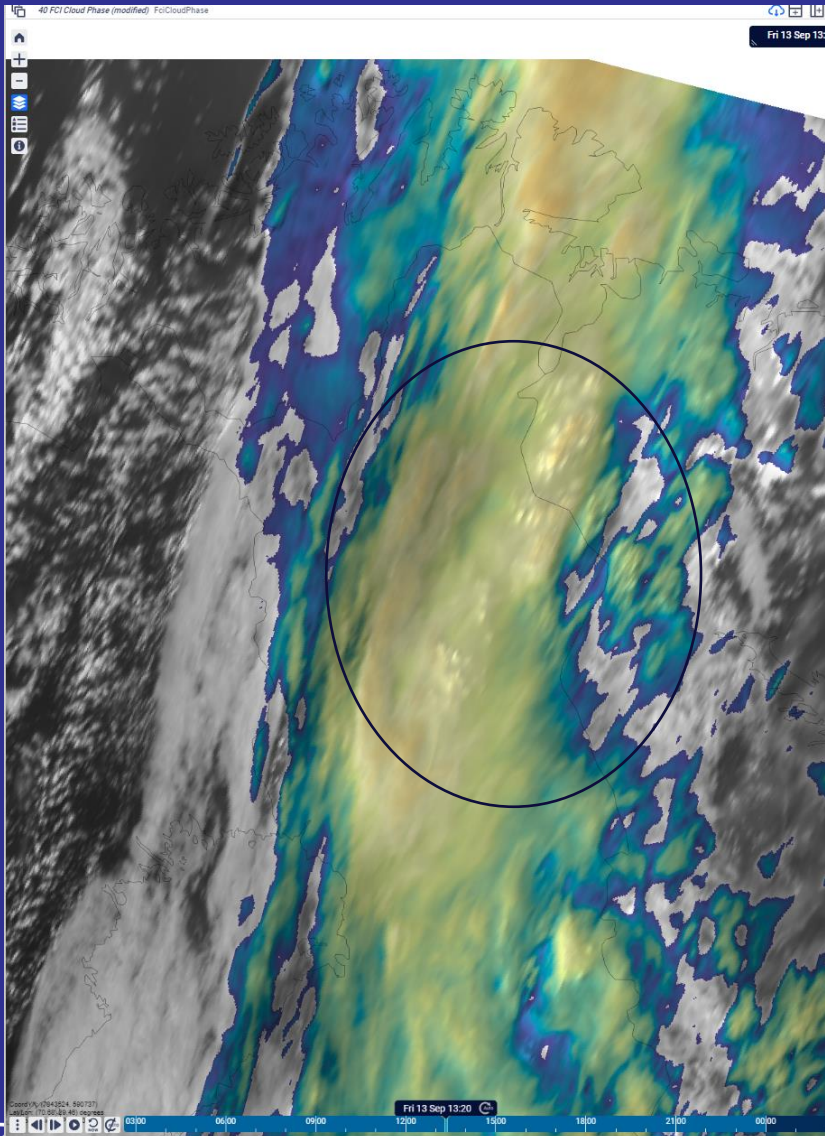
SEVIRI – Day Microphysics RGB

FCI - Day Microphysics RGB

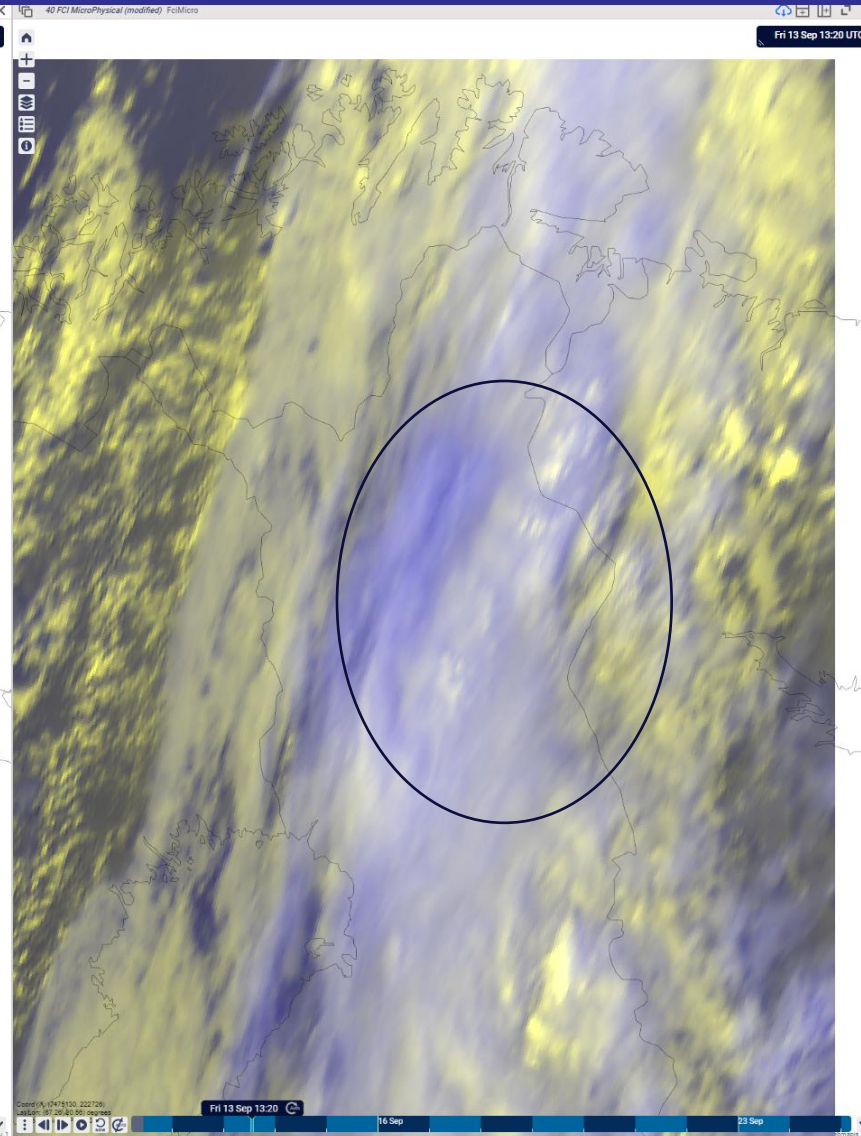


Embedded CB in Finnish Lapland (around 67N here)– 13th September, 2024, 13:20 UTC

FCI – IR Sandwich



SEVIRI – HRV Clouds RGB



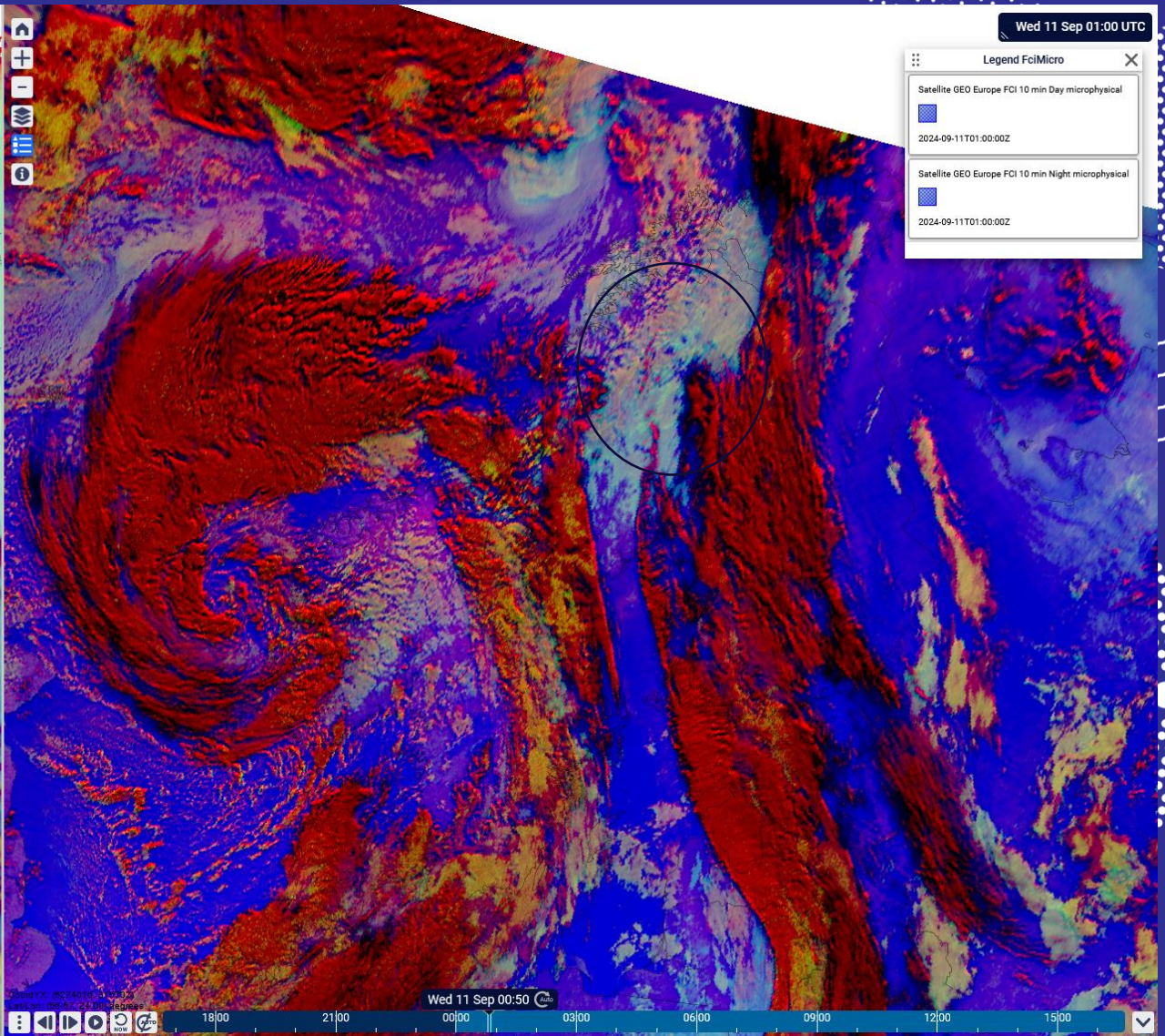
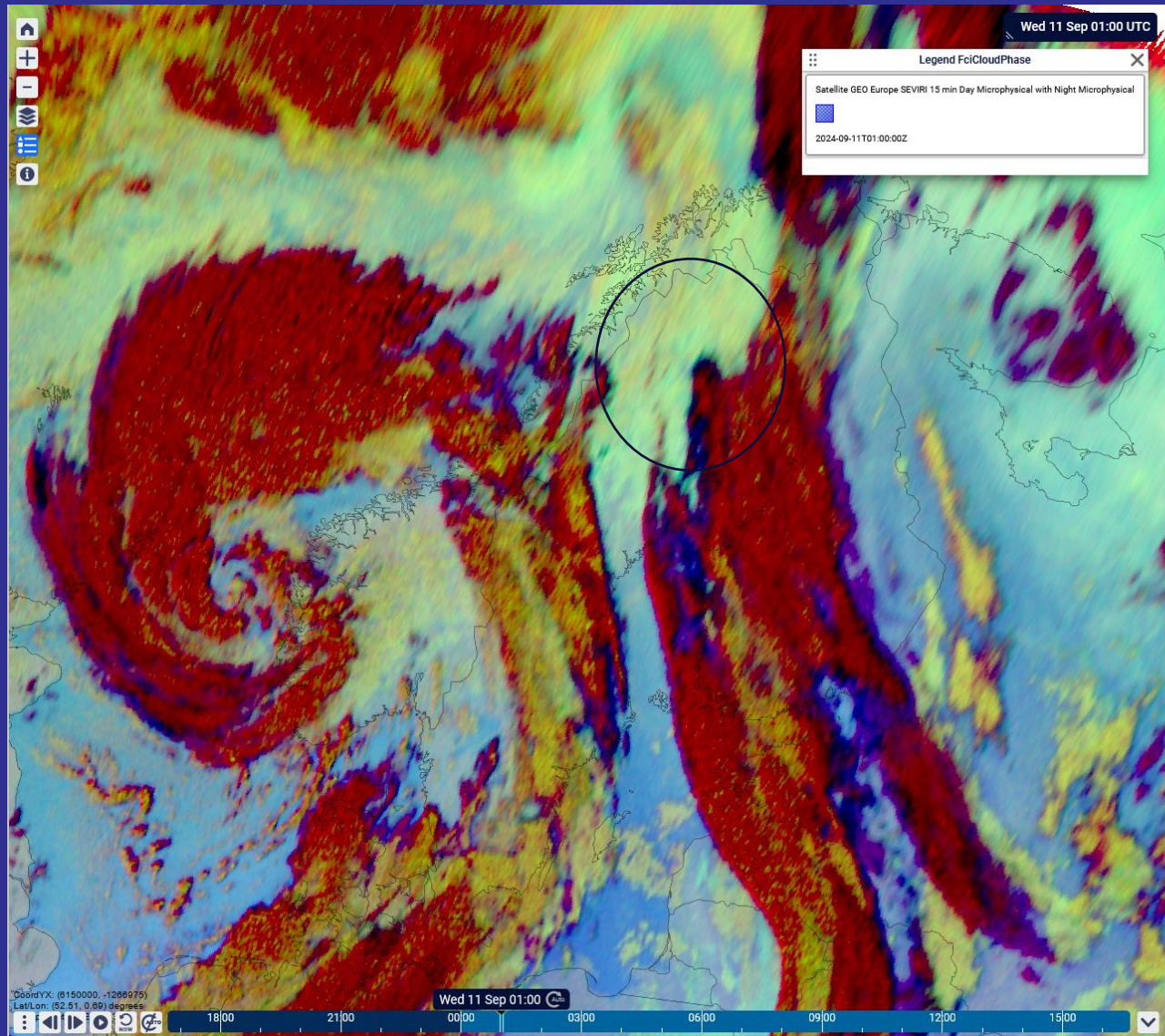
- CBs are also visible in HRV Clouds RGB but the contrast in FCI image is better, and some smaller CBs are also visible.
- Nighttime no HRV



Night time broken cloudiness in northern Sweden – 11th September, 2024, 01 UTC

SEVIRI – Night Microphysics RGB

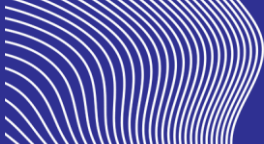
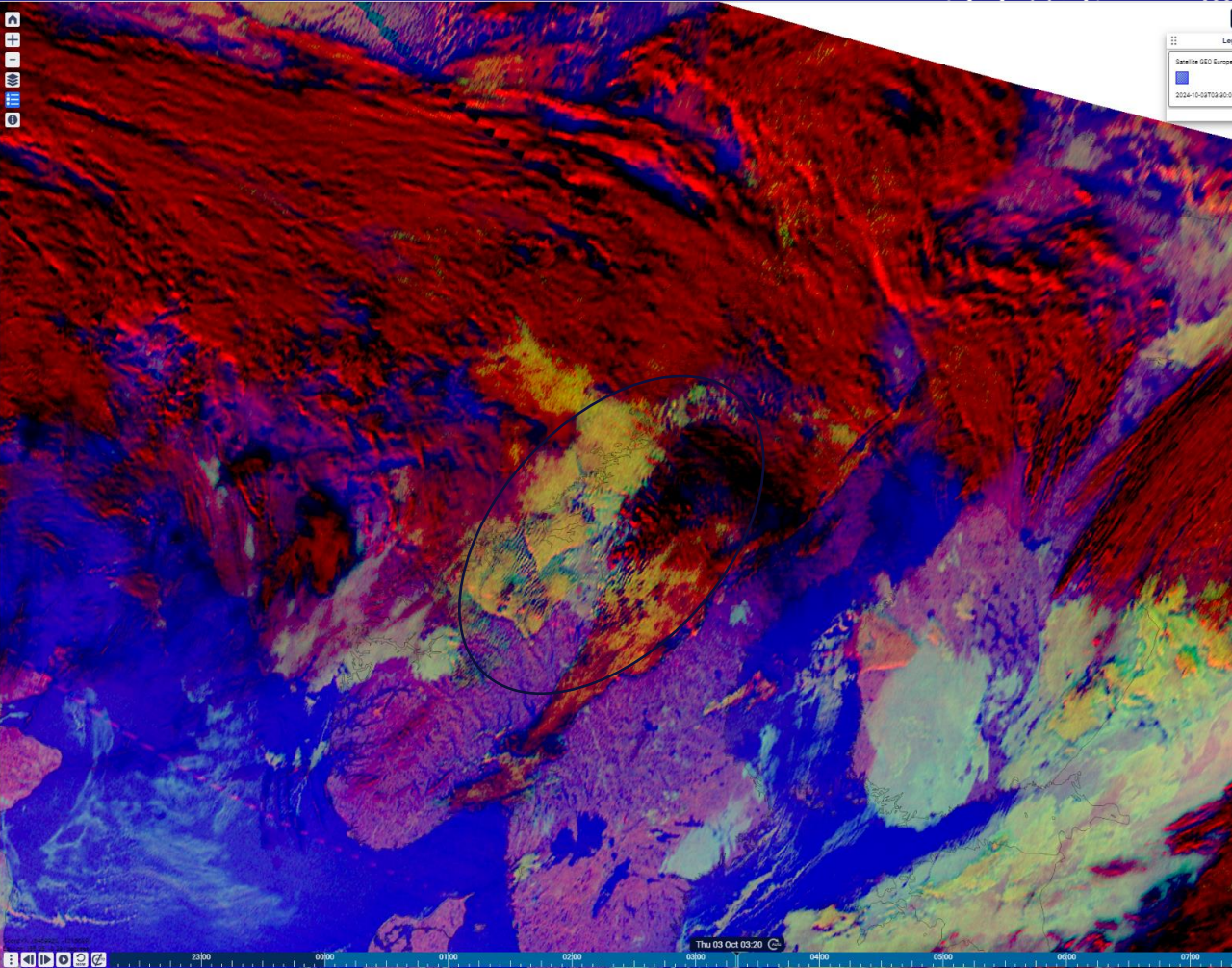
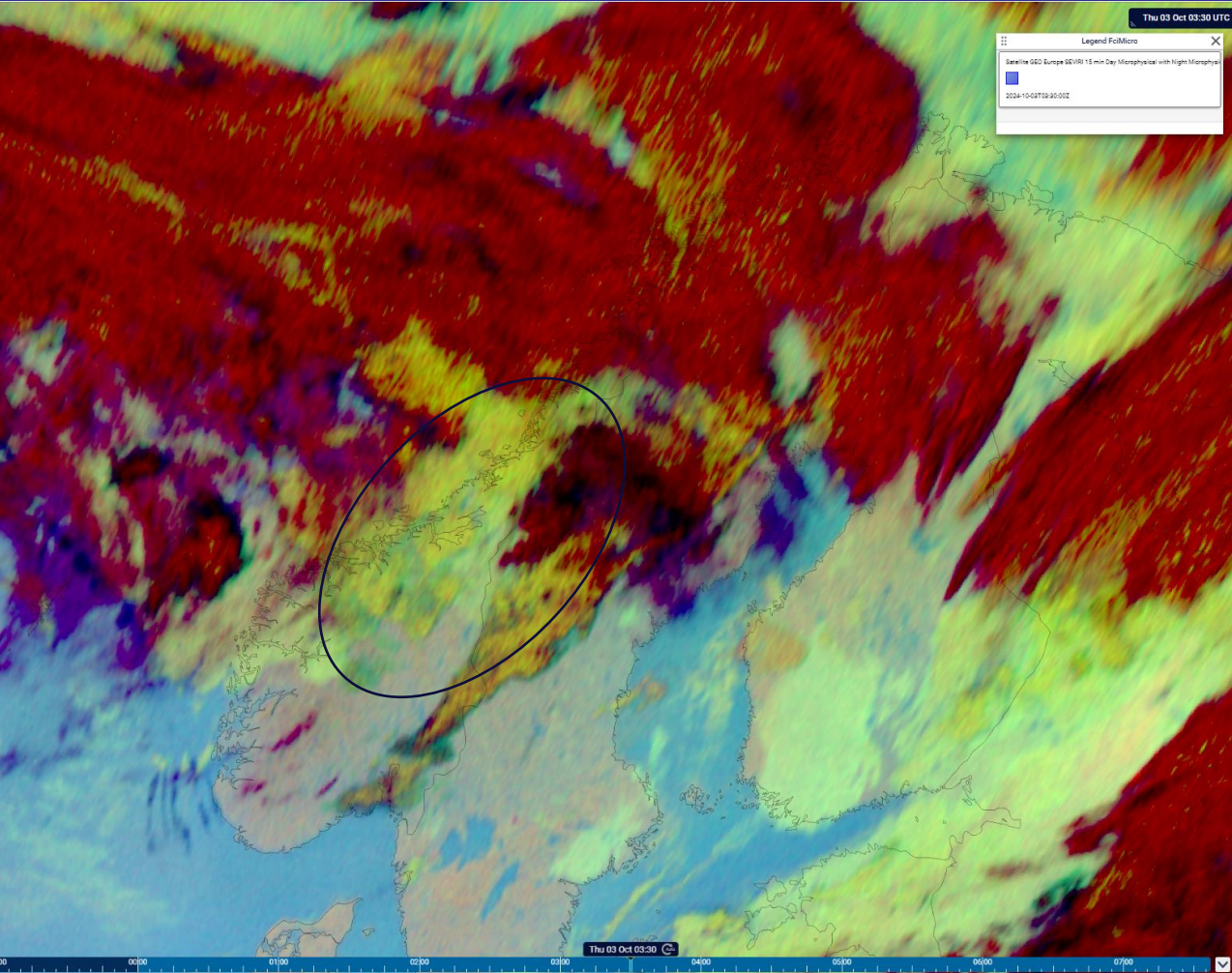
FCI – Night Microphysics RGB



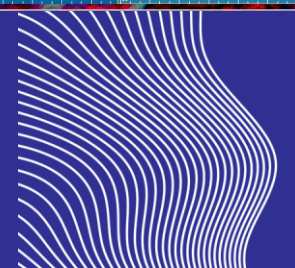
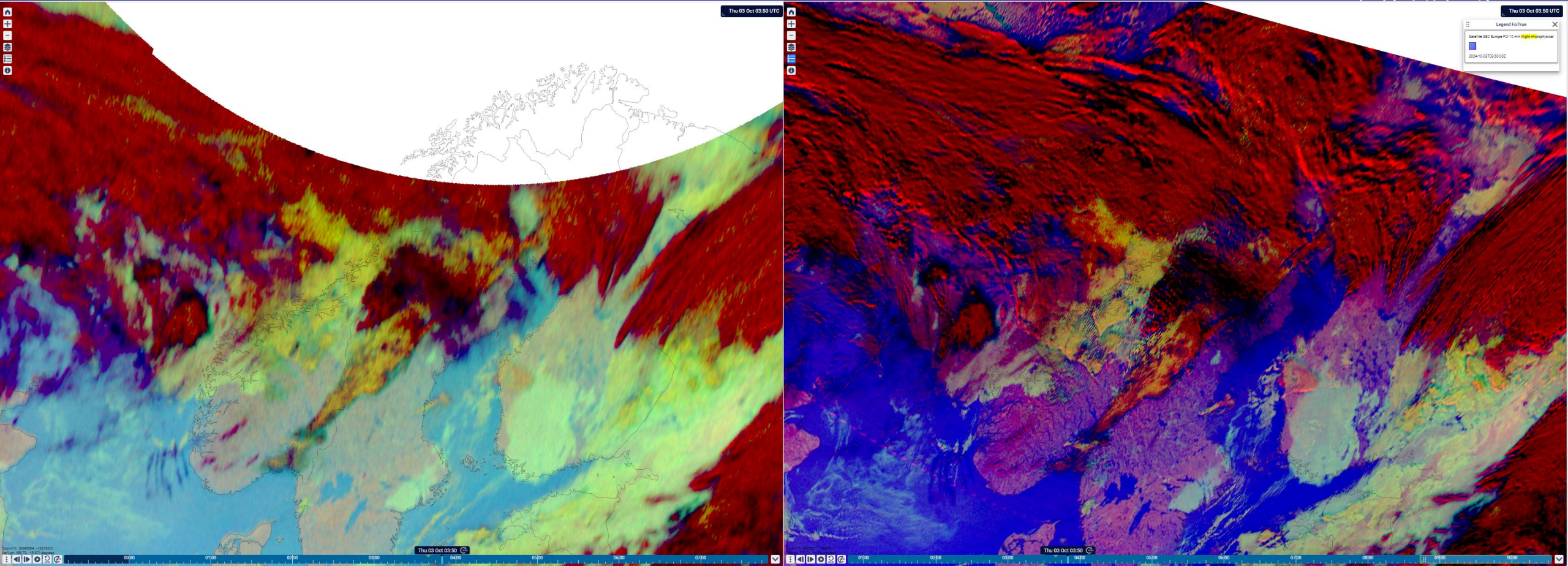
Night time trapped lee waves in central Sweden/Norway Scandi mountains – 3th October, 2024, 3:30 UTC

SEVIRI – Night Microphysics RGB

FCI – Night Microphysics RGB



Night time trapped lee waves in central Sweden/Norway, Scandi mountains – 3th October, 2024, 3:30 UTC - animation



Thank you, questions?

