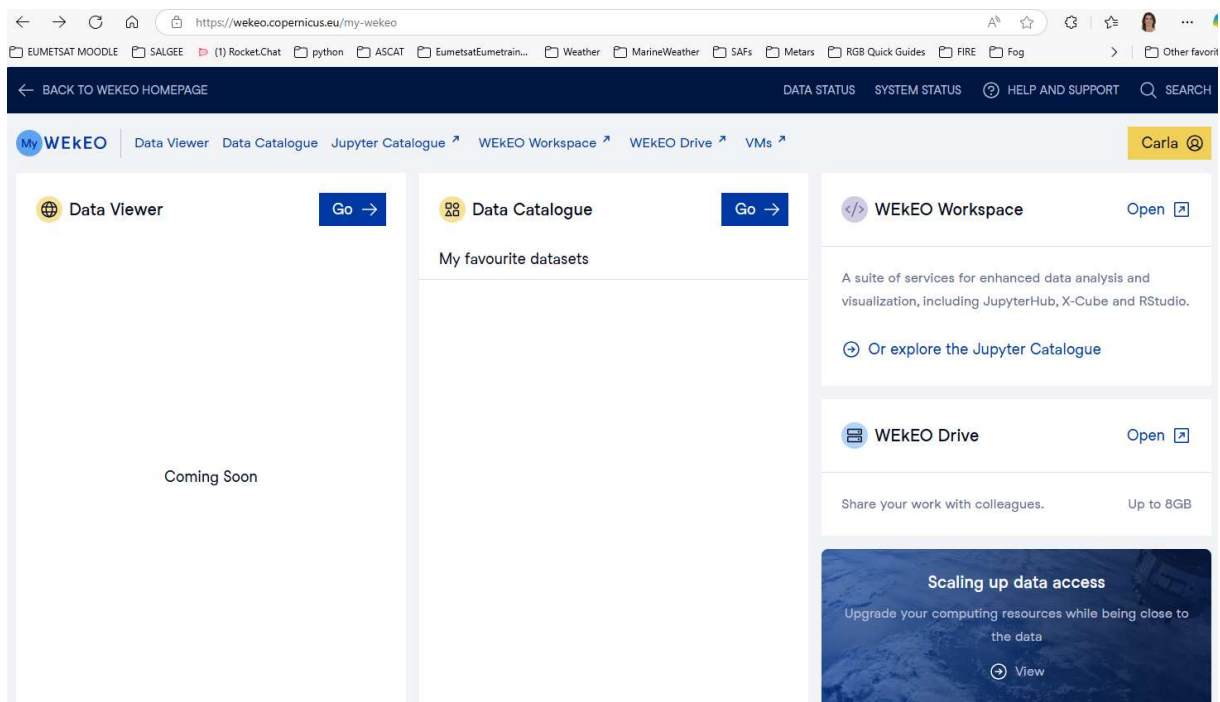


Guidelines for Generating Image Visualizations

Downloading images from EUMETView

- Log in to your WEKEO user account: <https://wekeo.copernicus.eu/my-wekeo>, and Go to **WEKEO Workspace (Open)**:



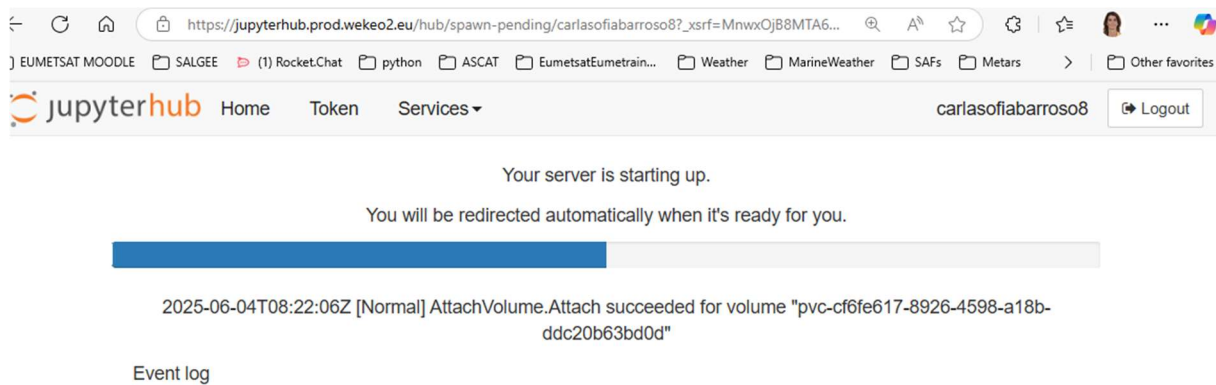
- On the following window that opens select **Earth Observation Tools**:

Server Options

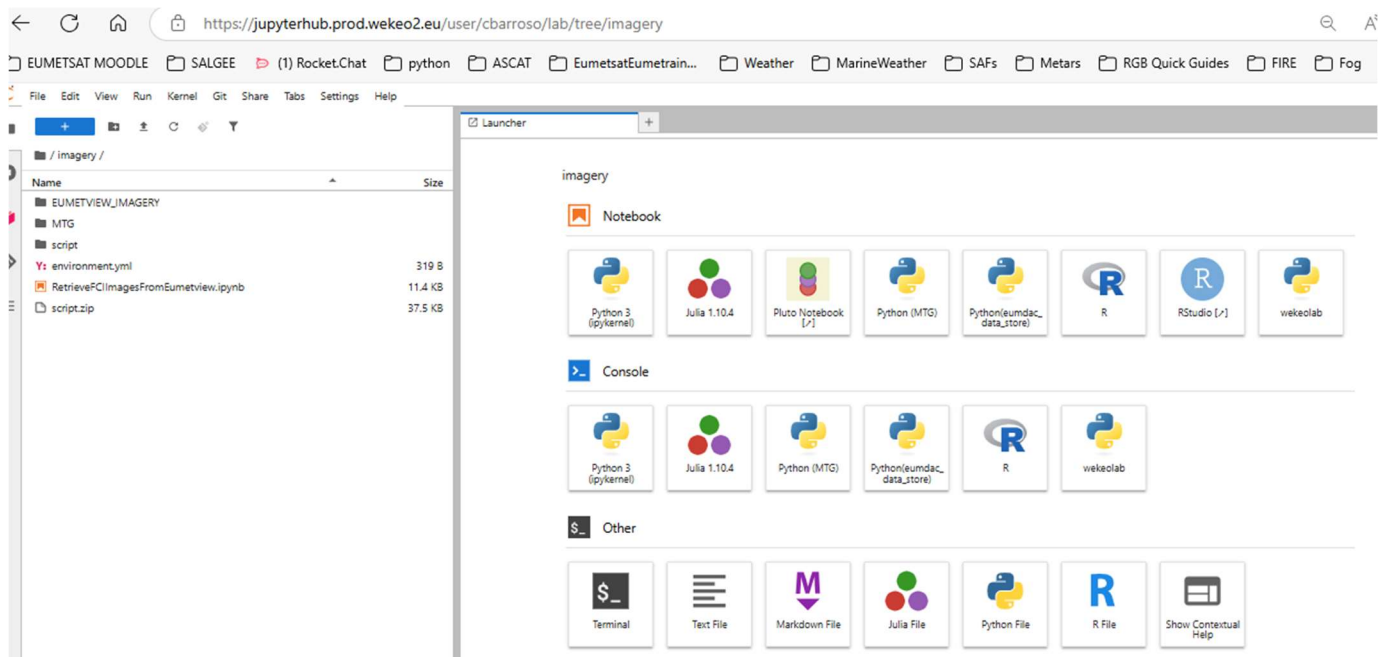
- ☐ Machine Learning
- ☒ Earth Observation Tools
- ☐ Machine Learning (GPU)

Start

Please note that it may take a few minutes for the server to start. You will be seeing a loading screen like:



- Once loaded, navigate to imagery folder:



- Double click on the RetrieveFCIIImagesFromEumetview.ipynb to open it. Follow the instructions within the Jupyter Notebook.

Please note that the possible images you will be able to download from EUMETView, while running **RetrieveFCIIImagesFromEumetview.ipynb** are:

```
#product_name='rgb_truecolour'
#product_name='rgb_cloudphase'
#product_name='rgb_dust'
#product_name='rgb_geocolour'
#product_name='product_name='li_afa'
#product_name='rgb_cloudtype'
#product_name='rgb_fog'
#product_name='vis06_hrfi'
#product_name='ir105_hrfi'
```

After running the notebook you should be able to find images inside the folder **\$HOME/imagery/EUMETVIEW_IMAGERY/**

To copy this files to your local PC you may wish to compressed them.

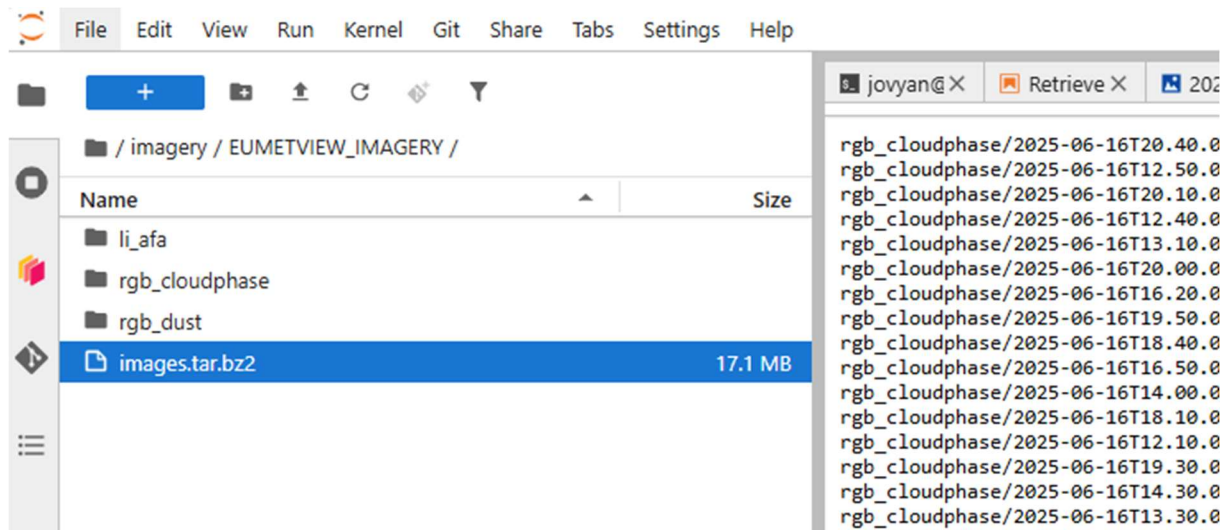
- Open a terminal window and copy & paste the following line commands:

```
cd $HOME/imagery/EUMETVIEW_IMAGERY/
```

```
tar -cvf images.tar *
```

```
bzip2 images.tar
```

You should find the file with bz2 extension under the
\$HOME/imagery/EUMETVIEW_IMAGERY/ folder:



- On the navigation window click on the file and with the right-hand button of your mouse select download. The compressed file will be downloaded to your local computer