

CIRA Overview

Beth Kessler

Colorado State University

19 July 2018

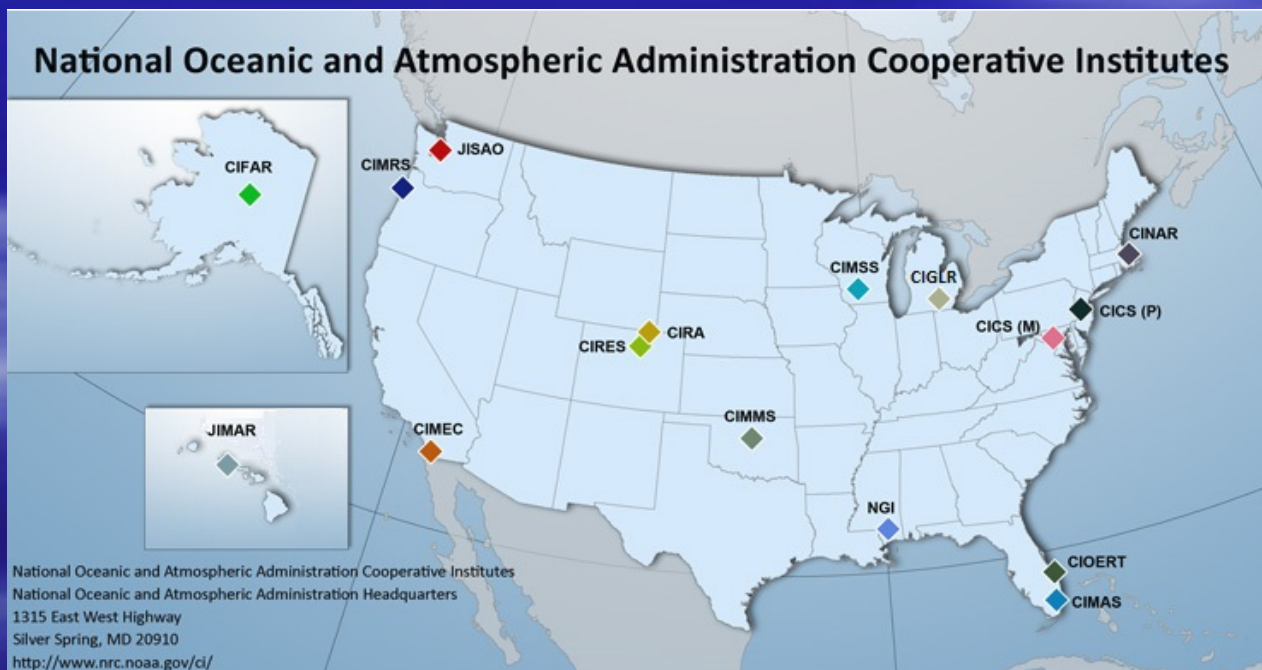


Connecting Models and Observations



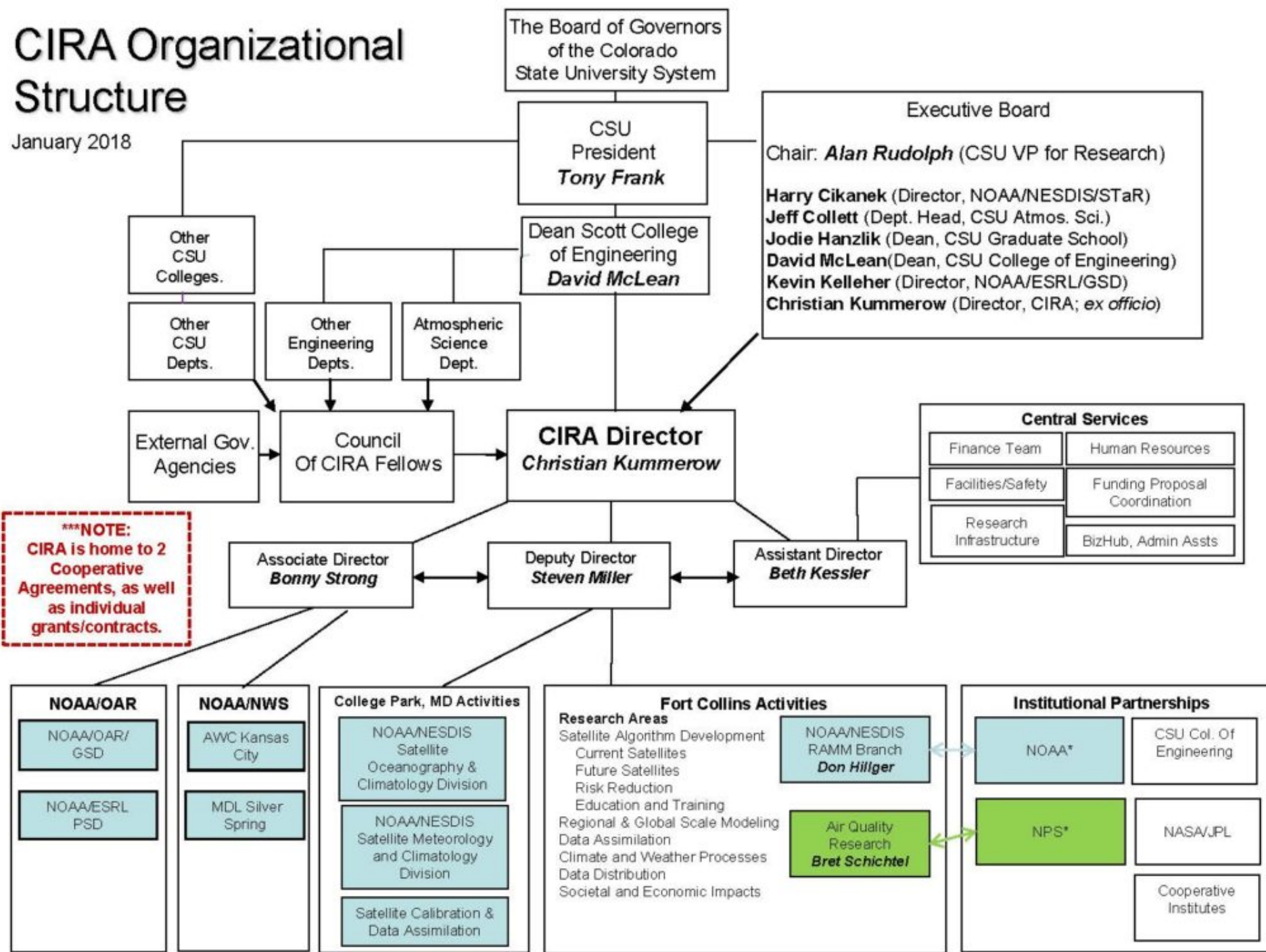
What is a NOAA Cooperative Institute?

- The NOAA Cooperative Institutes are academic and non-profit research institutions that demonstrate the highest level of performance and conduct research that supports NOAA's Mission Goals and Strategic Plan.
- CI's are established at research institutions with outstanding graduate programs in NOAA-relevant sciences.



CIRA Organizational Structure

January 2018



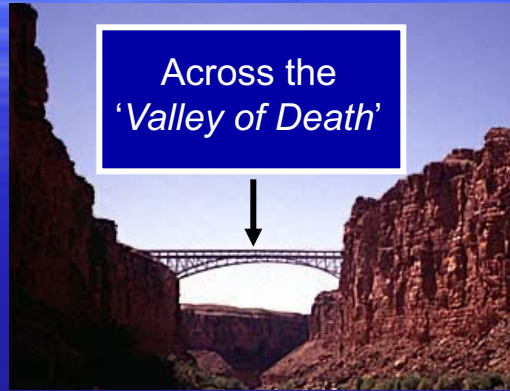
CIRA Mission & Overview

Serving as a Bridge

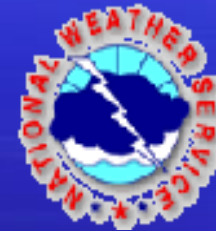
*From the
'Ivory Towers'
of Research...*



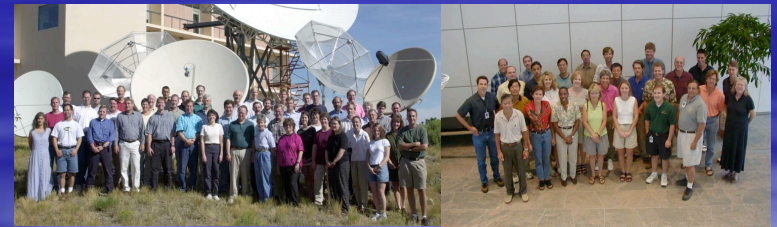
Across the
'Valley of Death'



*...To Practical
Applications
for Operations*



~150 scientists/staff, distributed across Ft. Collins (CSU), Boulder (NOAA/ESRL), Kansas City (AWC), College Park (NCWP), and Silver Spring (MDL).



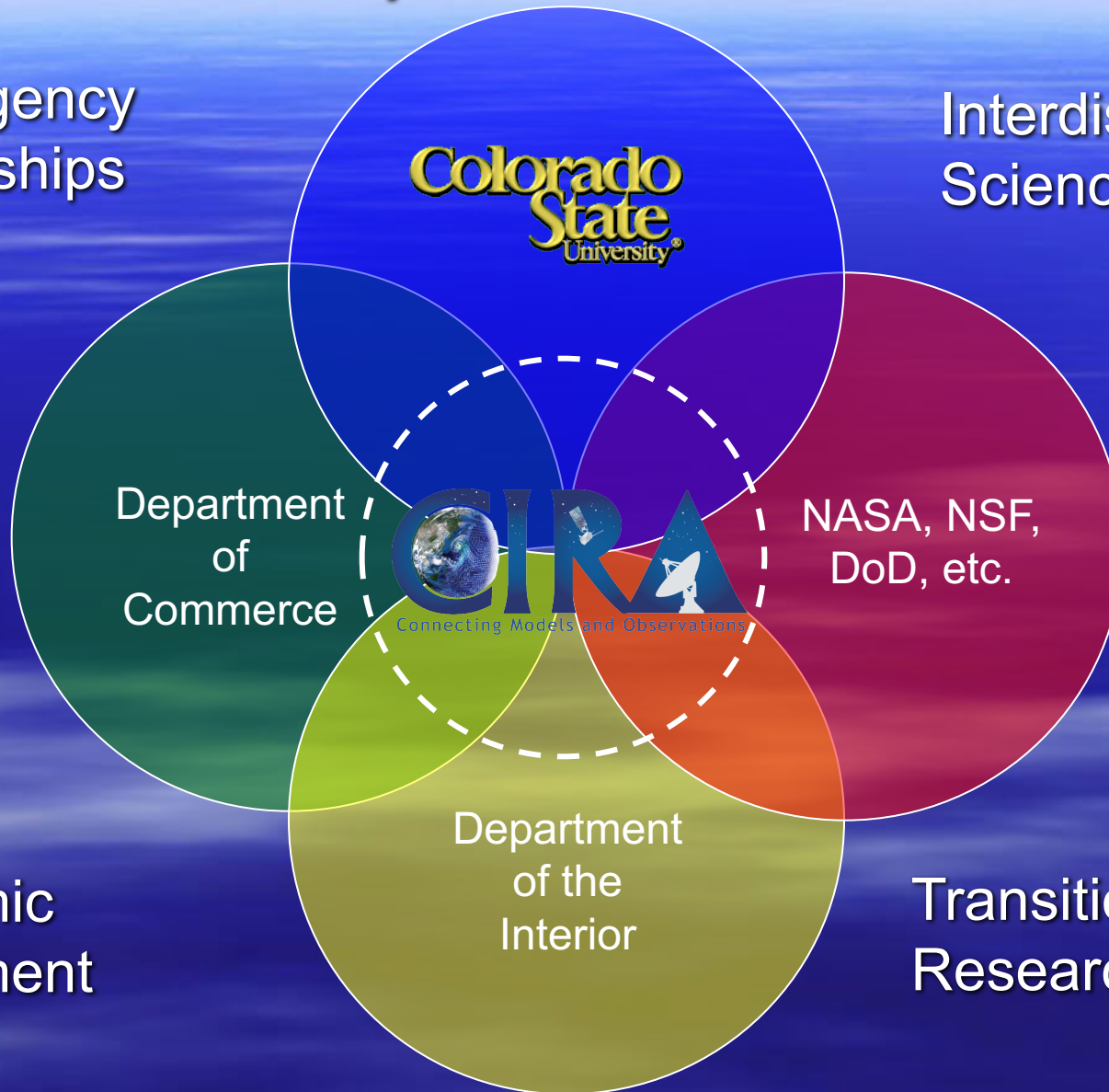
Roughly 60% of active CIRA projects (and 75% funding) tied to NOAA, with NASA, DoD, and NPS support comprising ~21% of total activity.

Total Research Funding ~\$24 Million

Federal Cooperative Partnerships

Multi-Agency
Partnerships

Interdisciplinary
Science



Academic
Enrichment

CIRA Highlights

- Diverse, interdisciplinary research program
- Partnered with one of the top-ranked atmospheric science program in the Nation with access to faculty expertise in Engineering, Hydrology, Natural Resources, and Social Science
- Multi-agency cooperative agreements with dual-use philosophy
- Novel, cost-effective satellite ingest and processing capabilities via the Data Processing Center
- Focus on future satellite sensor technology, algorithms, techniques for assimilation into models, and validation
- On the threshold of exciting new science discoveries with next-generation satellites like GOES-R and the Day/Night Band!