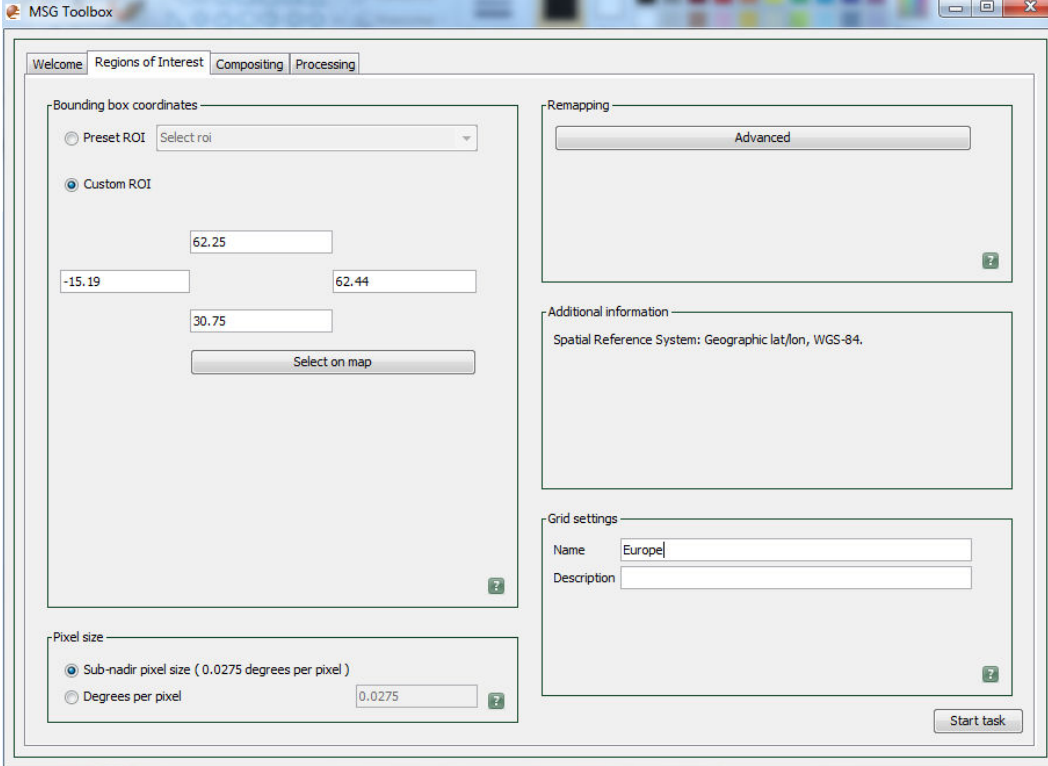


A. Producing daily composites from sub-daily input products

- 1) Open the MSG Toolbox (.bat file)
- 2) Select a ROI (either by entering the geo coordinates or by selecting on a map) and give it a name:

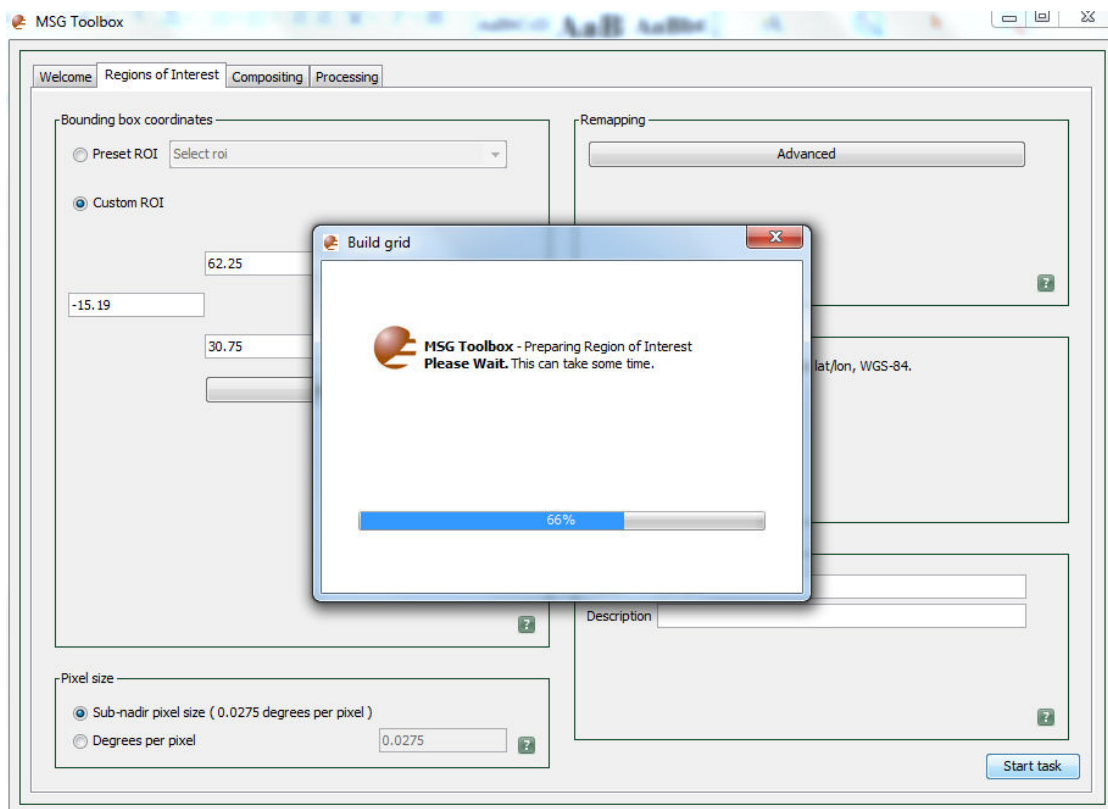


The screenshot shows the 'MSG Toolbox' window with the 'Regions of Interest' tab selected. The interface is divided into several sections:

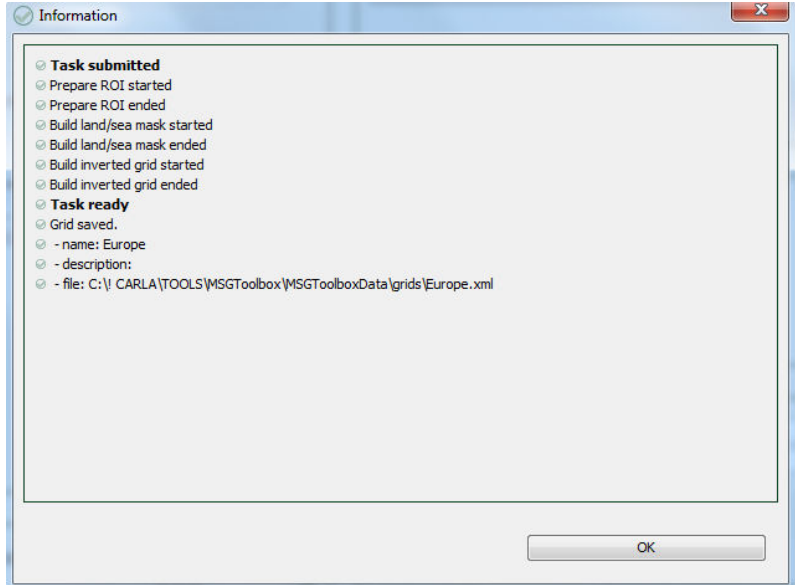
- Bounding box coordinates:** Includes radio buttons for 'Preset ROI' (with a dropdown menu) and 'Custom ROI'. Under 'Custom ROI', there are four input fields for coordinates: 62.25, -15.19, 62.44, and 30.75. A 'Select on map' button is located below these fields.
- Remapping:** Features a dropdown menu currently set to 'Advanced'.
- Additional information:** Displays 'Spatial Reference System: Geographic lat/lon, WGS-84.'
- Grid settings:** Includes a 'Name' field containing 'Europe1' and an empty 'Description' field.
- Pixel size:** Includes radio buttons for 'Sub-nadir pixel size (0.0275 degrees per pixel)' (which is selected) and 'Degrees per pixel'. A text box next to the second option contains the value '0.0275'.

A 'Start task' button is located at the bottom right of the window.

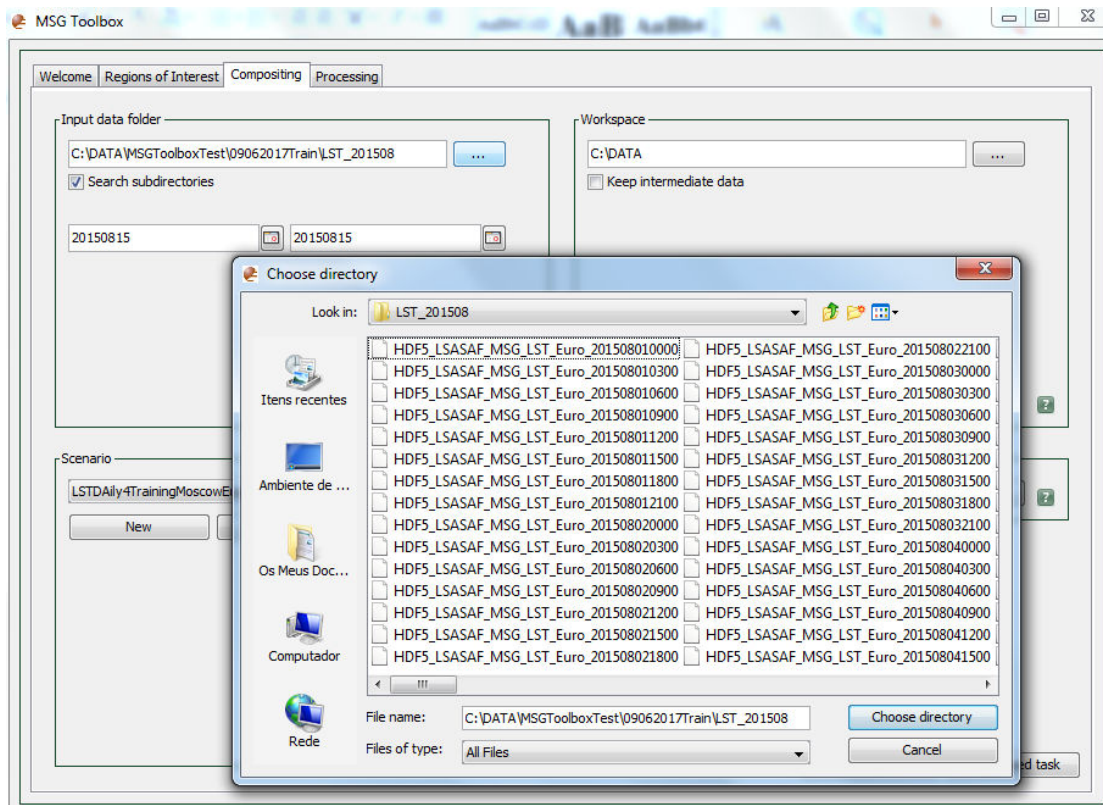
- 3) Press the **Start Task** button at the bottom (right hand side) to save the ROI



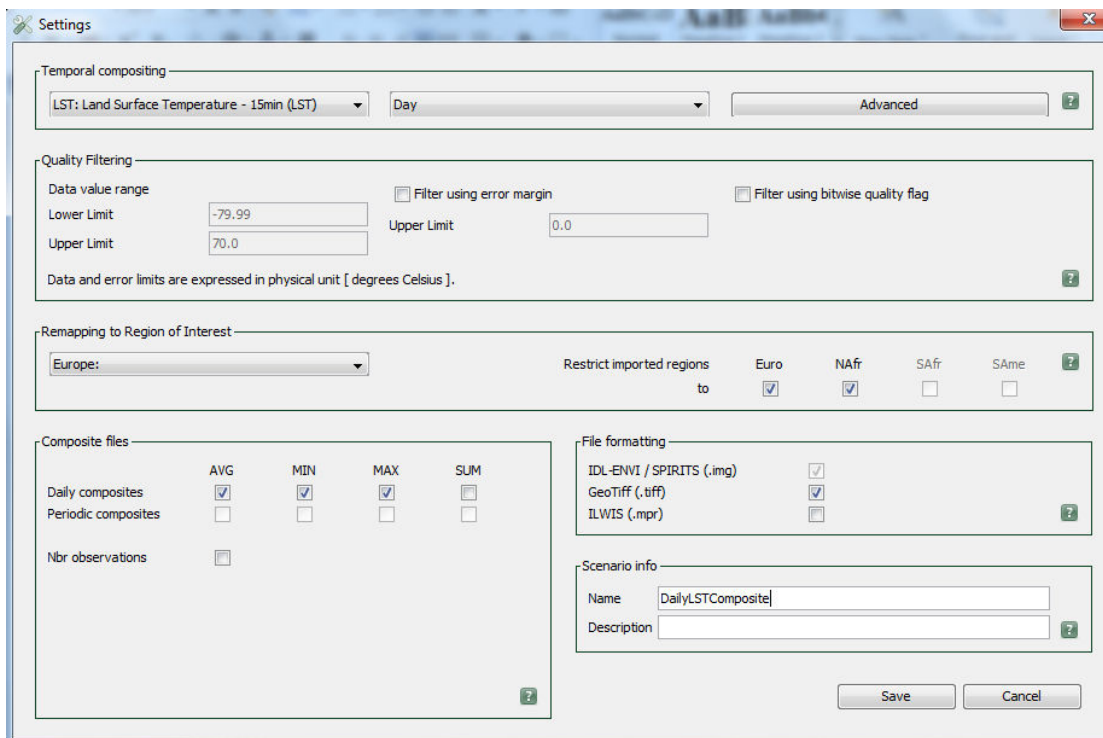
4) At the end of the processing an **Information** box will be shown:



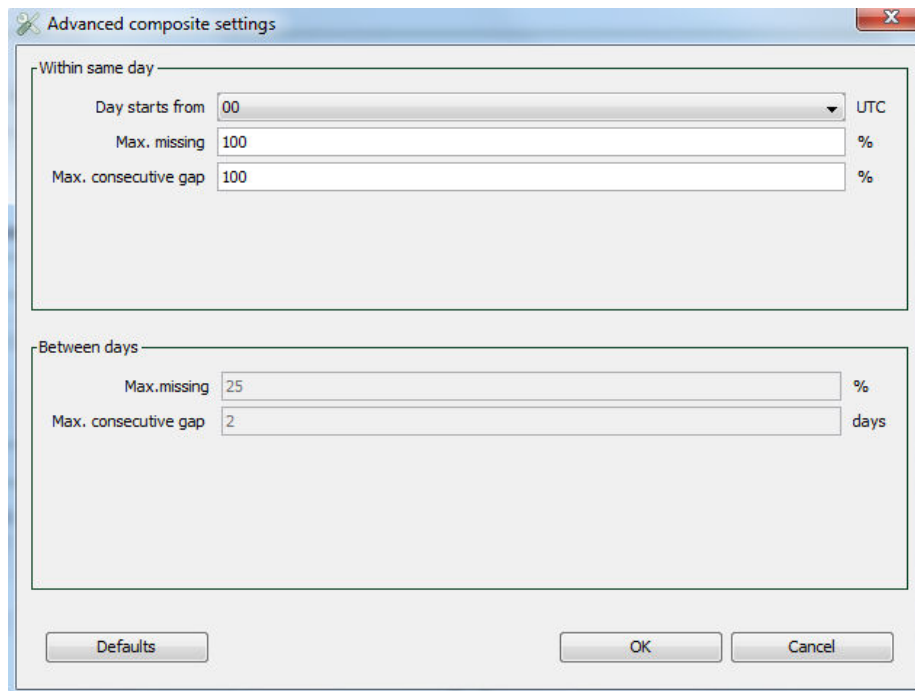
5) Select the **Compositing** tab. Here indicate where data is stored in your PC and give the dates of your data.



6) Select Scenario **New** and introduce the following settings:

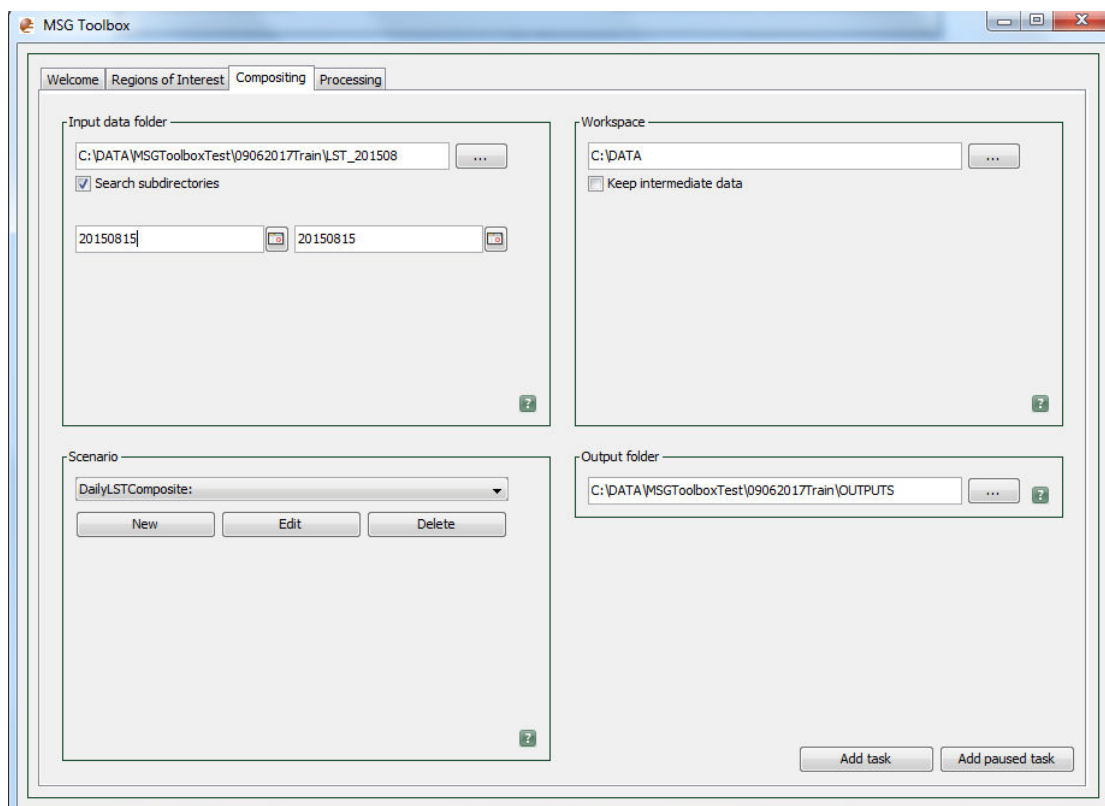


In the **Advance** button introduce the following settings:

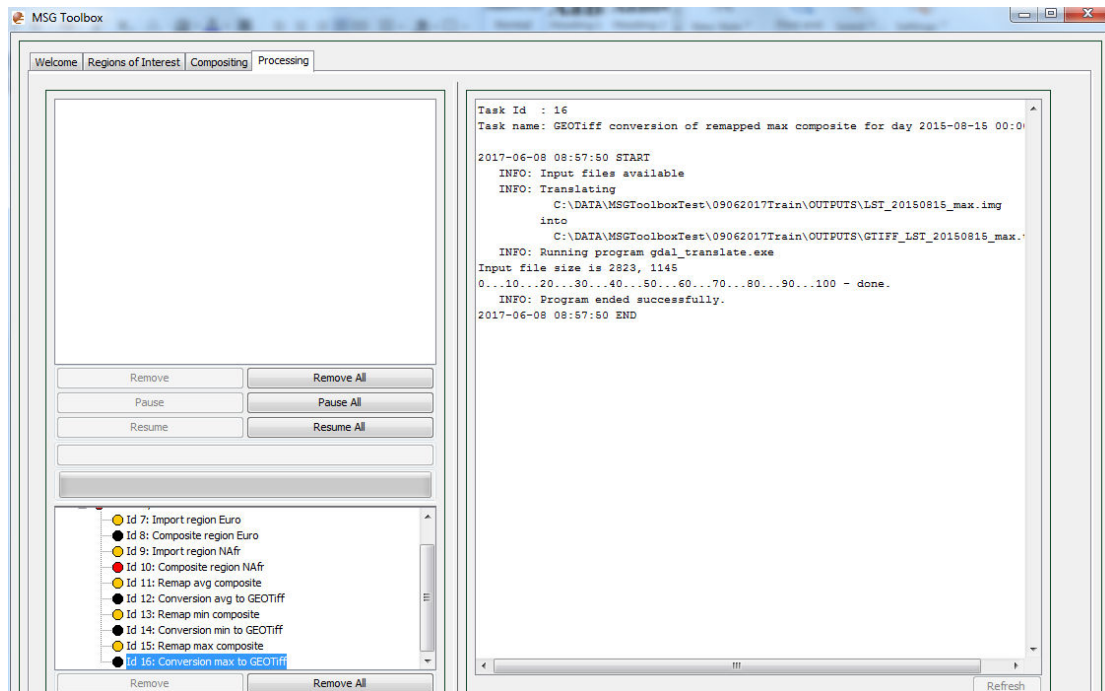


Go back to the Settings Window tab and click **Save**.

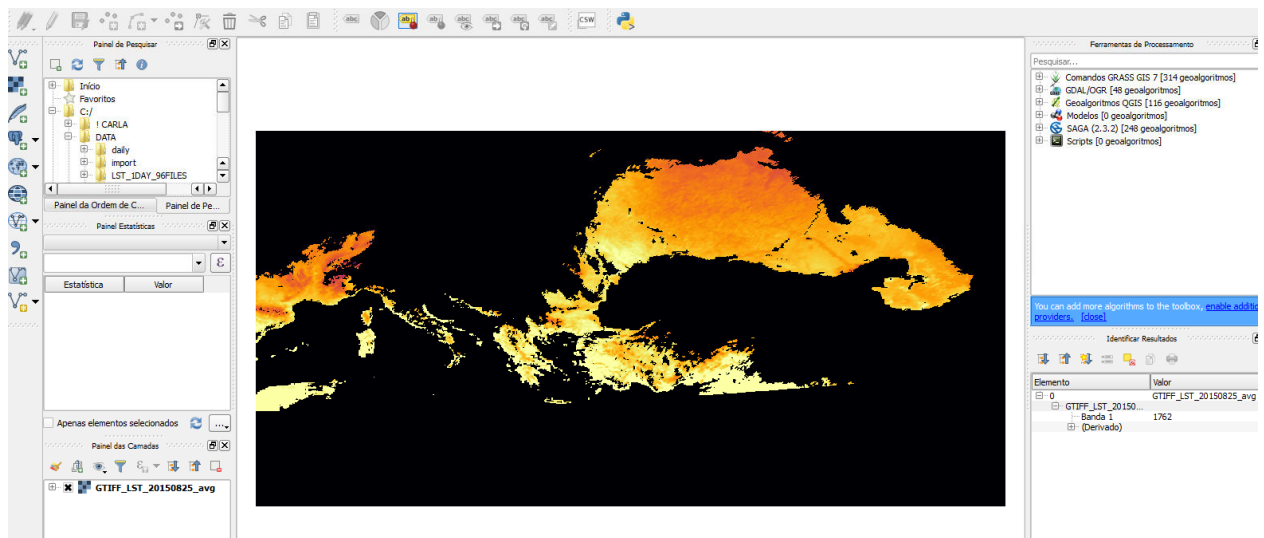
7) In the compositing window click the **Add task** button



8) Check the status of the processing in the **Processing** tab

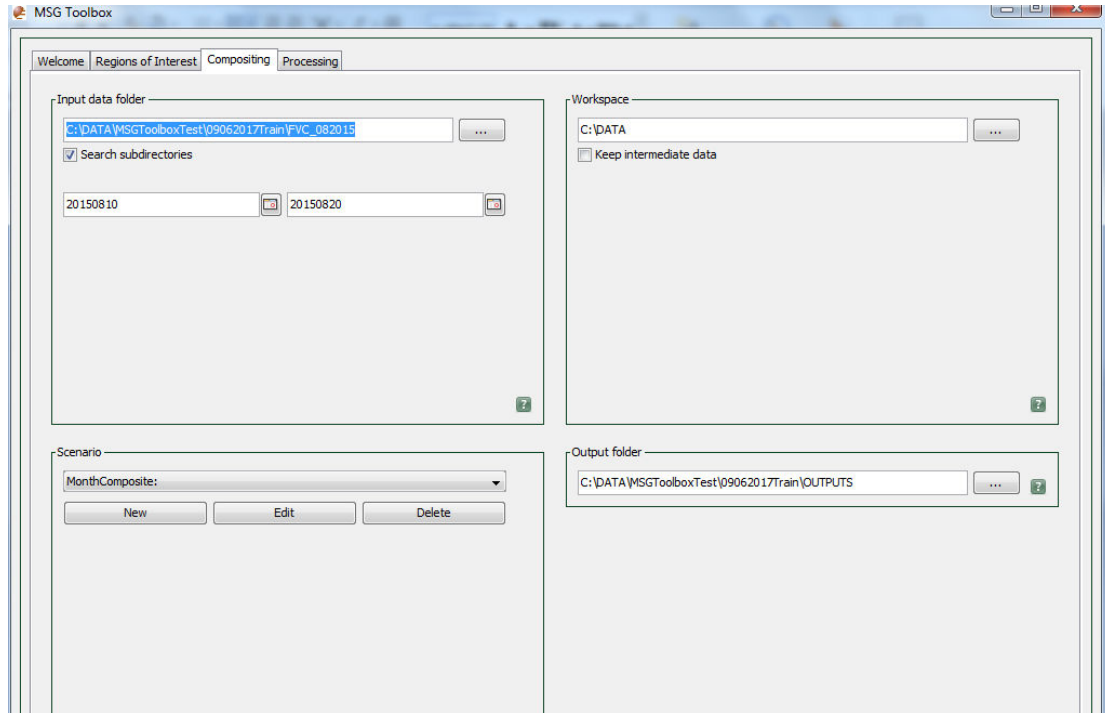


Your output is ready. You may open the GEOTiff file in some GIS software to work around with the data:

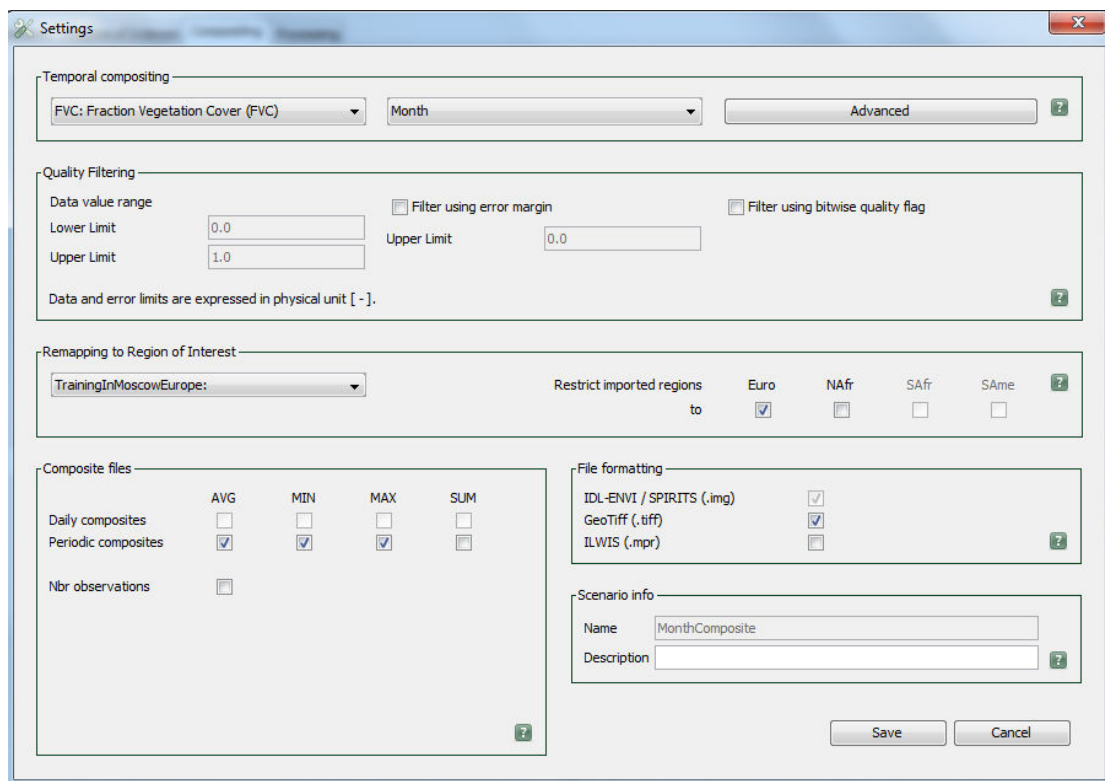


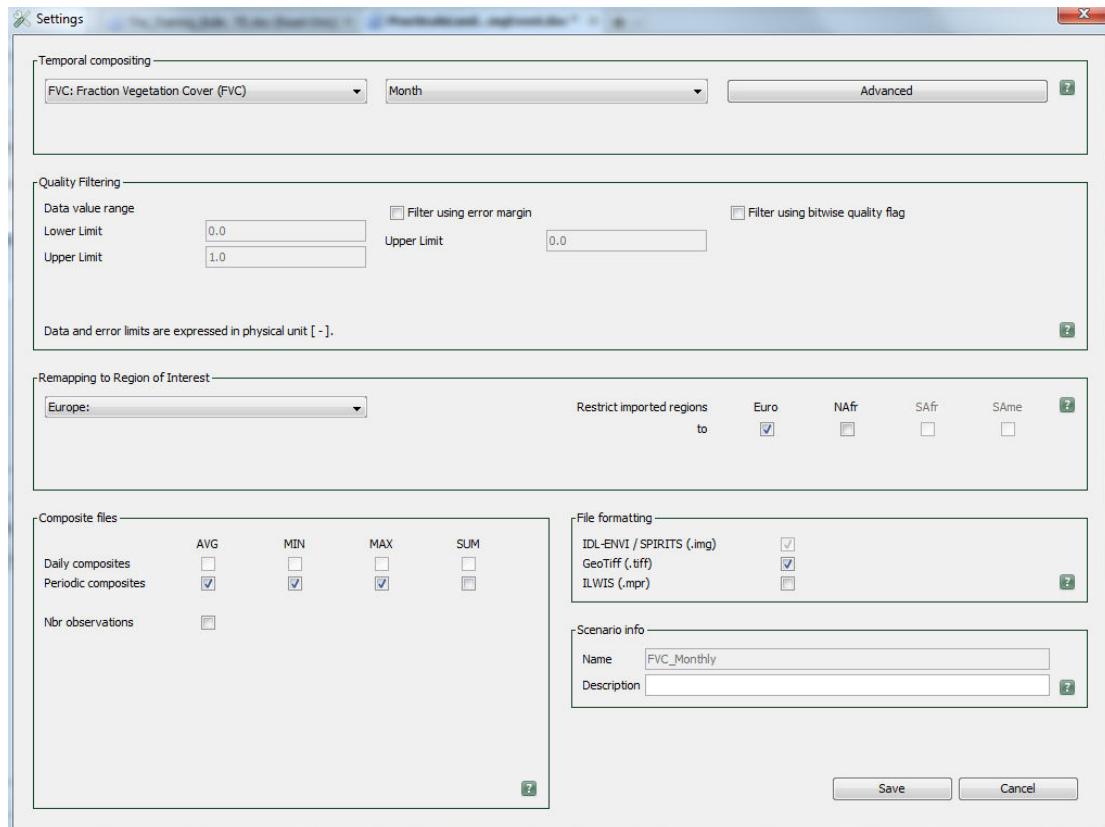
B. Producing monthly composites

- 1) Open the MSG Toolbox
- 2) Select a ROI (either by creating a new or select one already prepared)
- 3) Select the Compositing tab. Here indicate where data is stored in your PC and give the dates of your data:

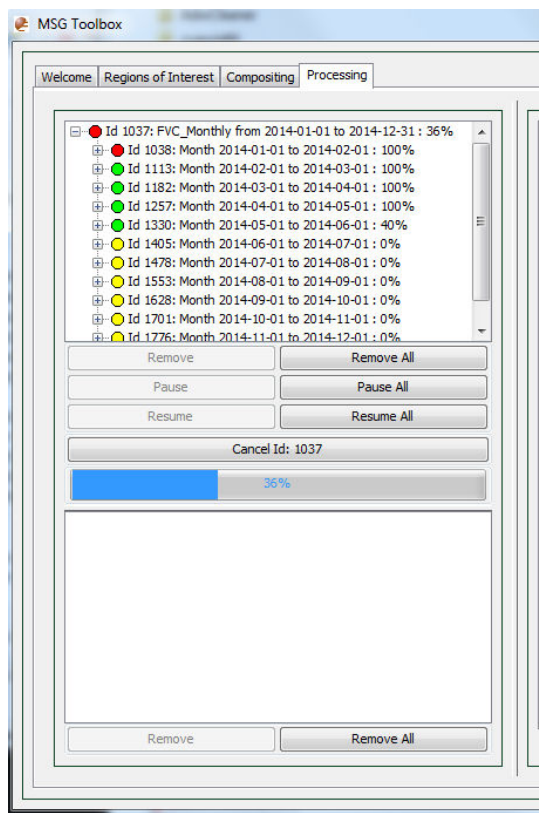


- 4) In this exercise we will be making FVC monthly average maps from August 2015, so create the new scenario FVC_Monthly and click Save :





5) You can check the status of the processing in the Processing window:



6) Once the processing is finished check the output.