

1./ Install conda

Conda is an open source package management system and environment management system – this is the easiest and most reliable way to manage the installation of all necessary components. [Here is the installation](#)

Or here the [direct installation of anaconda](#) – good if you run python or start with conda

Additional doc is [here](#)

2./ You need to activate an environment that contains all libraries and versions to run properly the notebooks

You need a proper environment file that contains all libraries to be used by conda to create the environment using the right versions. Here are:

For the dust.training hub download [environment_dust.yml](#)

For the data tailor hub download [environment_tailor.yml](#)

For the RGB Casablanca hub download [environment_casablanca.yml](#)

3./ Activate the environment:

Create the environment from yml file: `conda env create -f environment_***.yml`

Activate the new environment

For dust you have to type: `conda activate dust`

For the casablanca_hub you have to type: `conda activate casablanca`

For the data tailor you have to type: `conda activate tailor`

Important – the easiest is to activate one environment – then you may deactivate if you want a new one – run `conda deactivate`

Verify that the new environment was installed correctly `conda env list`

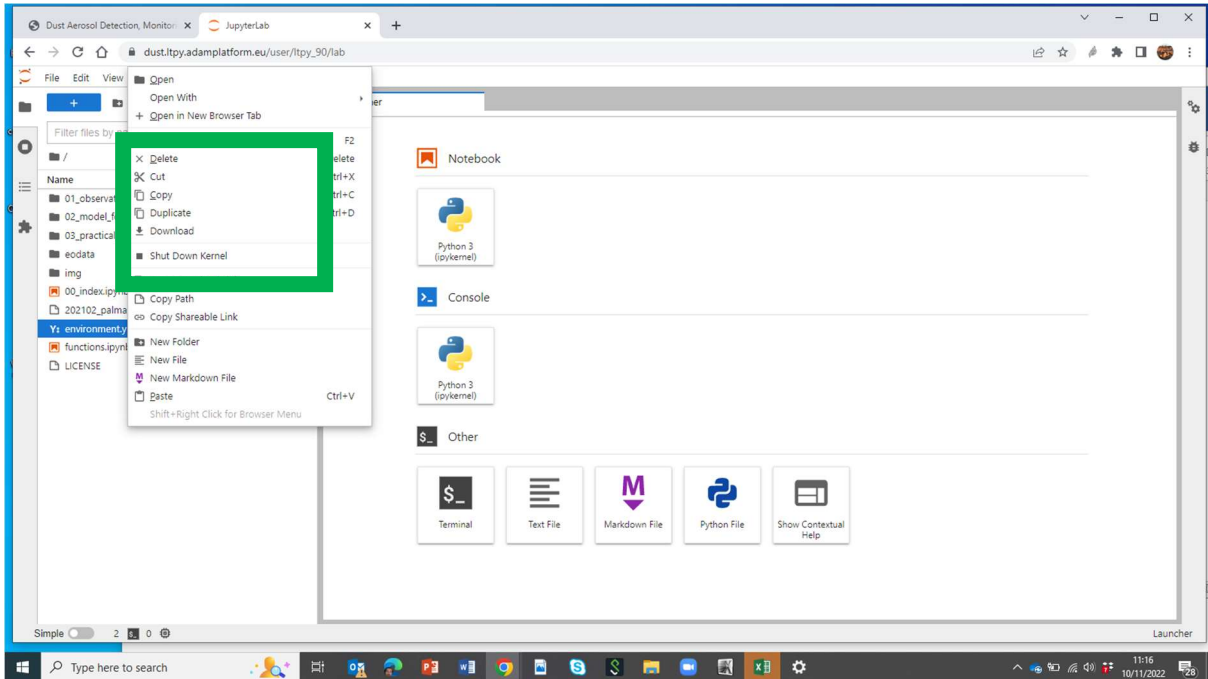
Very often may happen that you have conflicts with your python installation – [here how to manage when you have already a python installation](#) and [here a general guide to manage environments](#)

4./ Download the notebooks and data

The easiest way is to download the files you want to use and the data as above

Important – you need to download the `functions.ipynb` notebook

All data are available in the eodata folder - Just check the path of the notebook to be sure to download the right dataset

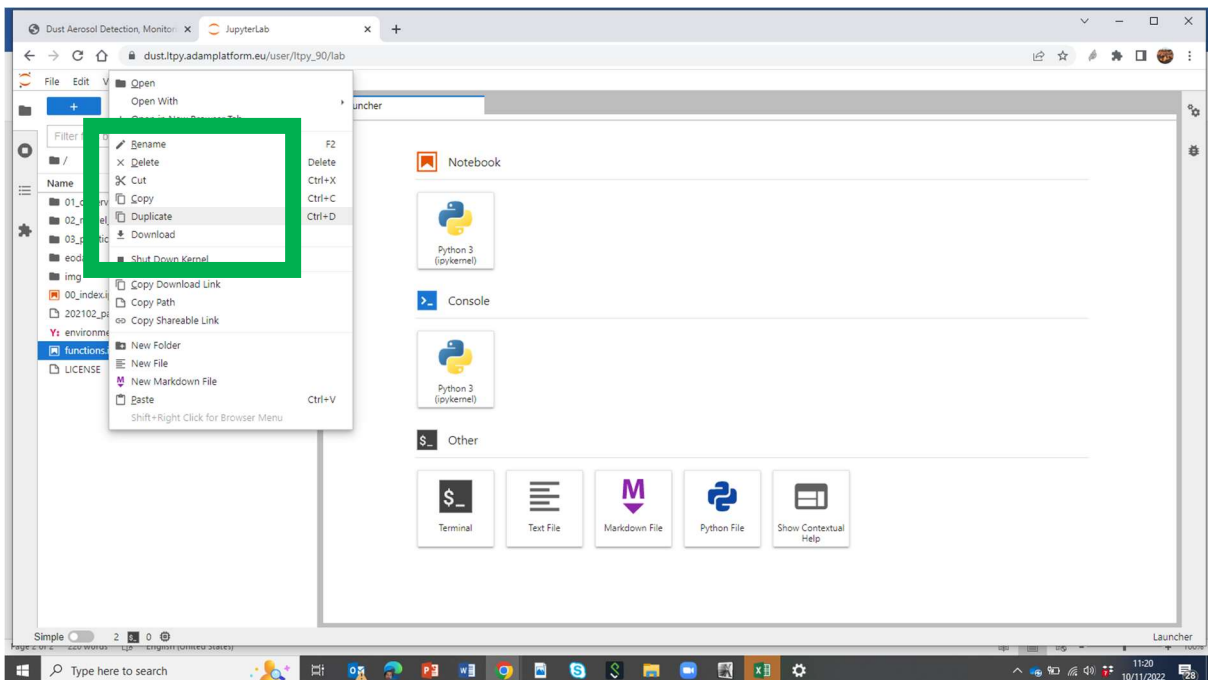


5./ Set up the jupyter lab

You also might want to install jupyterlab. See the description [here](#). Please make sure to install it while your conda environment is activated.

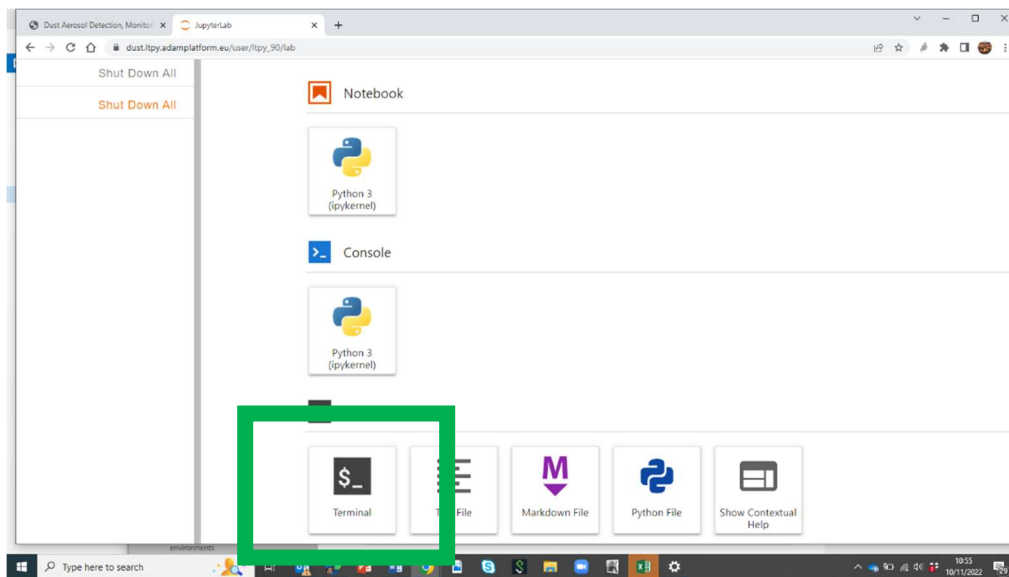
Once jupyterlab is installed in a terminal, navigate to the folder, where you downloaded the notebooks and open the jupyterlab interface with the following command:

```
jupyter lab
```



Create the environment file from the terminal

If you do not have environment file you can generate it – the option is not the recommended one



Open the terminal

NOTE: If you already have an `environment.yml` file in your current directory, it will be overwritten during this task.

Export your active environment to a new file – type in terminal:

```
conda env export > environment.yml
```

You can check the content with

```
cat environment.yml
```

You can download it from the main page and the use it in your computer