

# TMet Software Package and Possible Integration of Land SAF Products

Erdem ERDİ

Turkish State Meteorological Service  
Remote Sensing Division

3rd SALGEE Workshop 2013, Lisbon, Portugal<sub>1</sub>

## Outline:

- TMet Software Package Introduction
- Potential use of SEVIRI LandSAF products in TMet Software
- Past studies for Land SAF products' visualization

# TMet Software Package

---

- Developed for processing and visualization of the satellite data and products distributed by EUMETCast system.
- Some measures were taken to be able to better explore the synergy between different data.
- Aimed to be lightweight.

# TMet Software Package

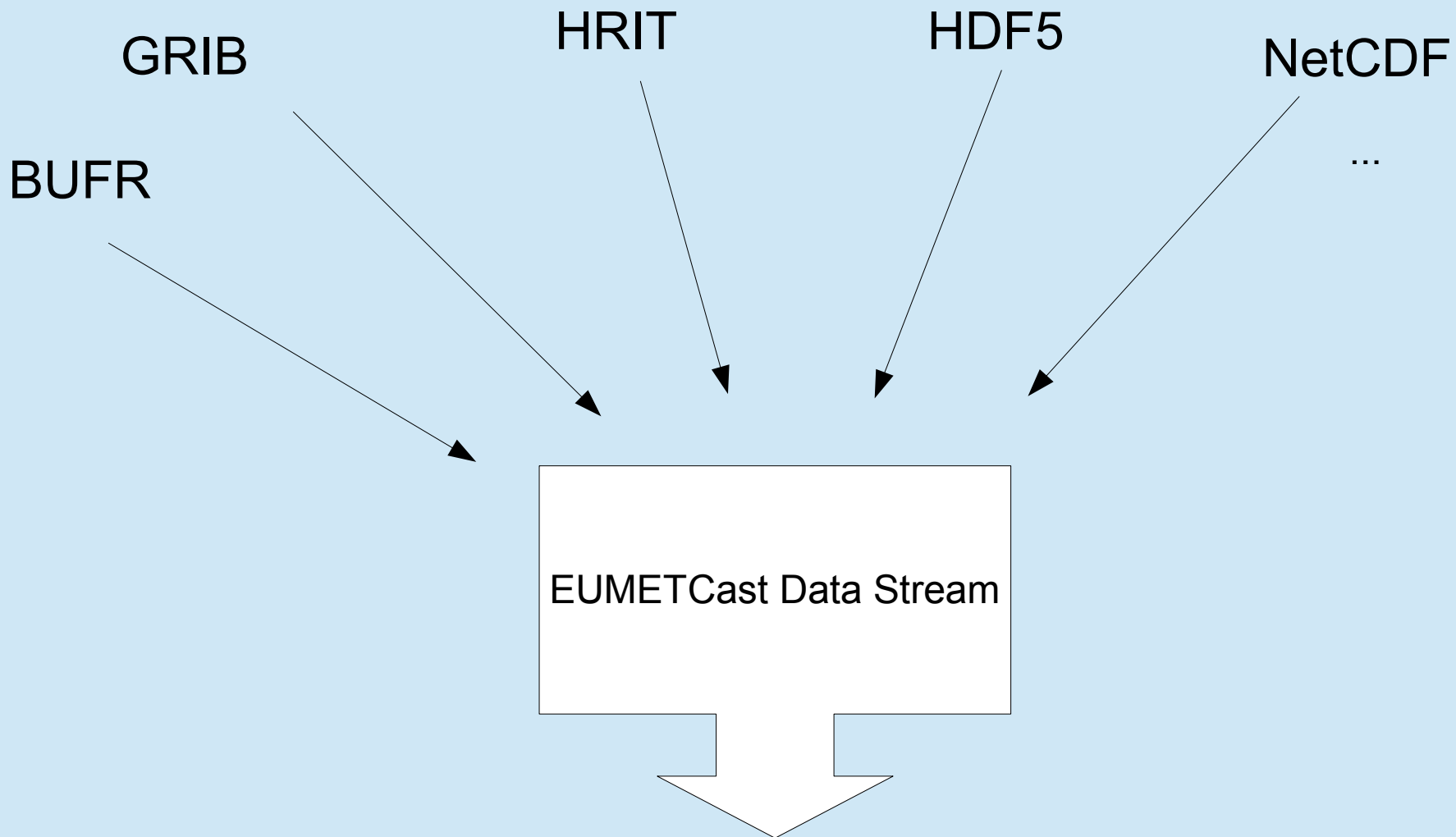
---

A wide variety of data is distributed via EUMETCast:

- Atmosphere
- Land oriented products
- Sea oriented products
- Energy
- Environment
- ...

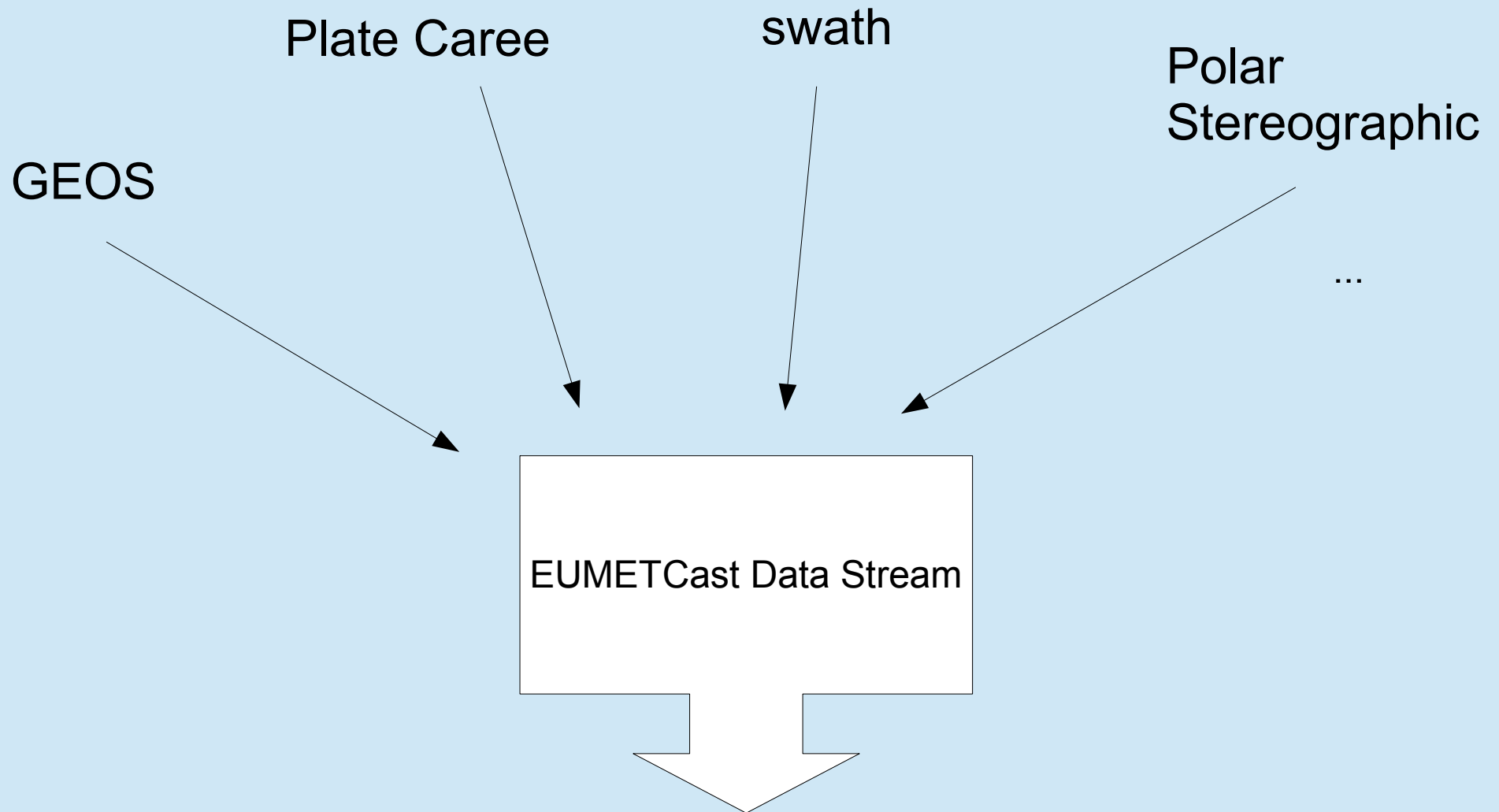
# TMet Software Package

---



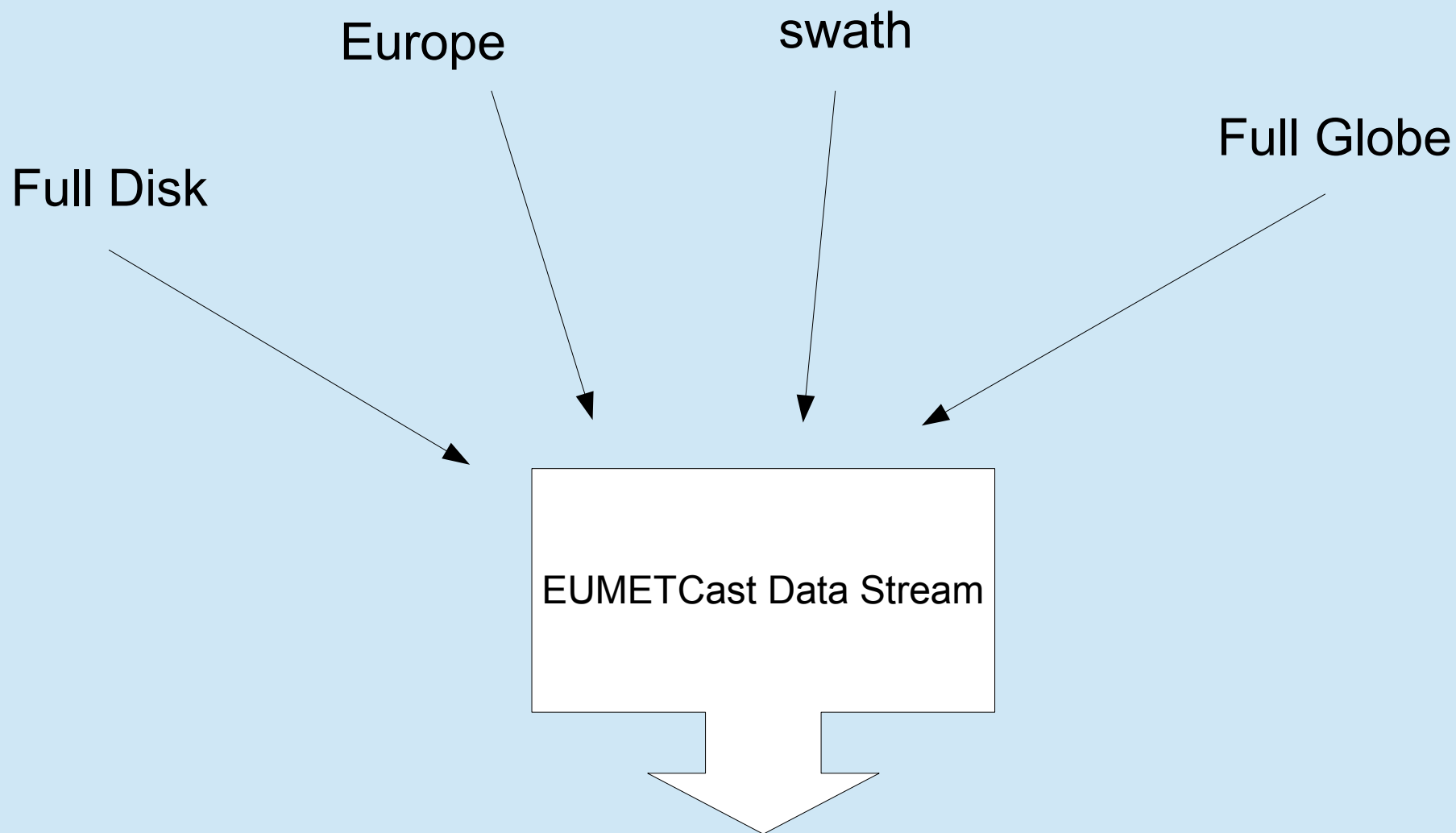
# TMet Software Package

---



# TMet Software Package

---



# TMet Software Package

---

- User defines master areas according to his/her needs.
- Processing unit (TMetPro) performs calibration, remapping and file format conversions (to HDF5) according to the user defined parameters.
- Visualization unit (TMetVis) is used to display and analyse the data and products which are processed through TMetPro.



# TMet Software Package

---

- Running on Windows but visualization unit can also be provided for Linux.
- Qt Framework and C++ language is used for development.
- One-click installer.
- Free of charge.

# TMet Software and SEVIRI LandSAF products

---

- Could allow cross checking of some of the properties found in different disciplines such as Cloud Mask.
- Could provide wider use of LandSAF products for other purposes, such as LST parameter for detecting anormally warm surface which could provide extra energy to convection ???
- Could provide easier use of the LandSAF products through the use of a file format converter:
  - GeoTIFF ??
  - JPEG2000 ??

# Past Studies in TSMS for LSASAF products

---

- MPEF FIR product is converted to Google Earth .kmz files to be sent and used by Forestry Firefight Division
- A landsaf product decoder which extracts the point data and produces visual image was developed for an agriculture institute.

# Past Studies in TSMS for LSASAF products

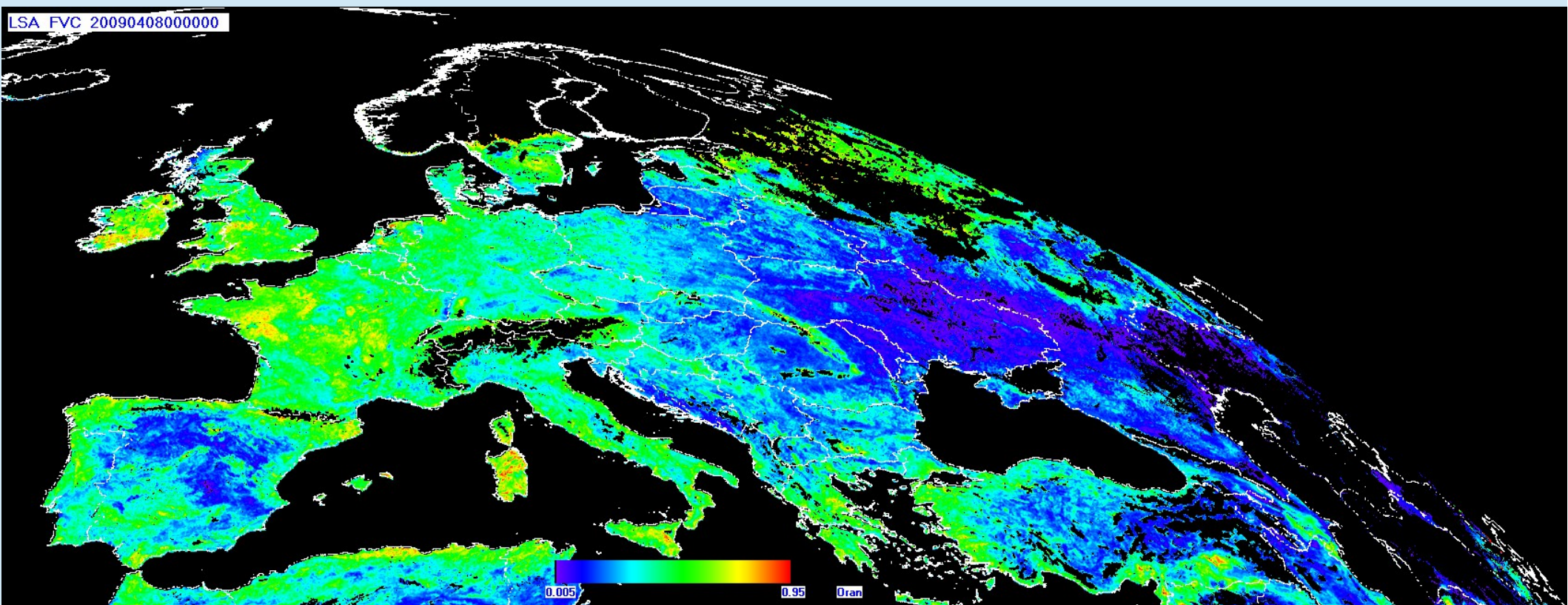
---

Sample decoded output of FVC product  
as an ASCII file

ID	Enlem	Boylam	Deger	Quality	Error
00001	37.4	35.8	0.6853	5	0.0726
00002	37.37	35.8	0.6853	5	0.0726
00003	37.37	35.68	0.9441	5	0.1105
00004	37.46	35.63	0.6739	5	0.0729
00005	37.55	35.65	0.4575	5	0.0567
00006	37.6	35.8	0.4148	5	0.04
00007	37.58	35.98	0.5182	5	0.04
00008	37.46	35.98	0.5924	5	0.0493
00009	37.37	35.96	0.6604	5	0.1026

# Past Studies in TSMS for LSASAF products

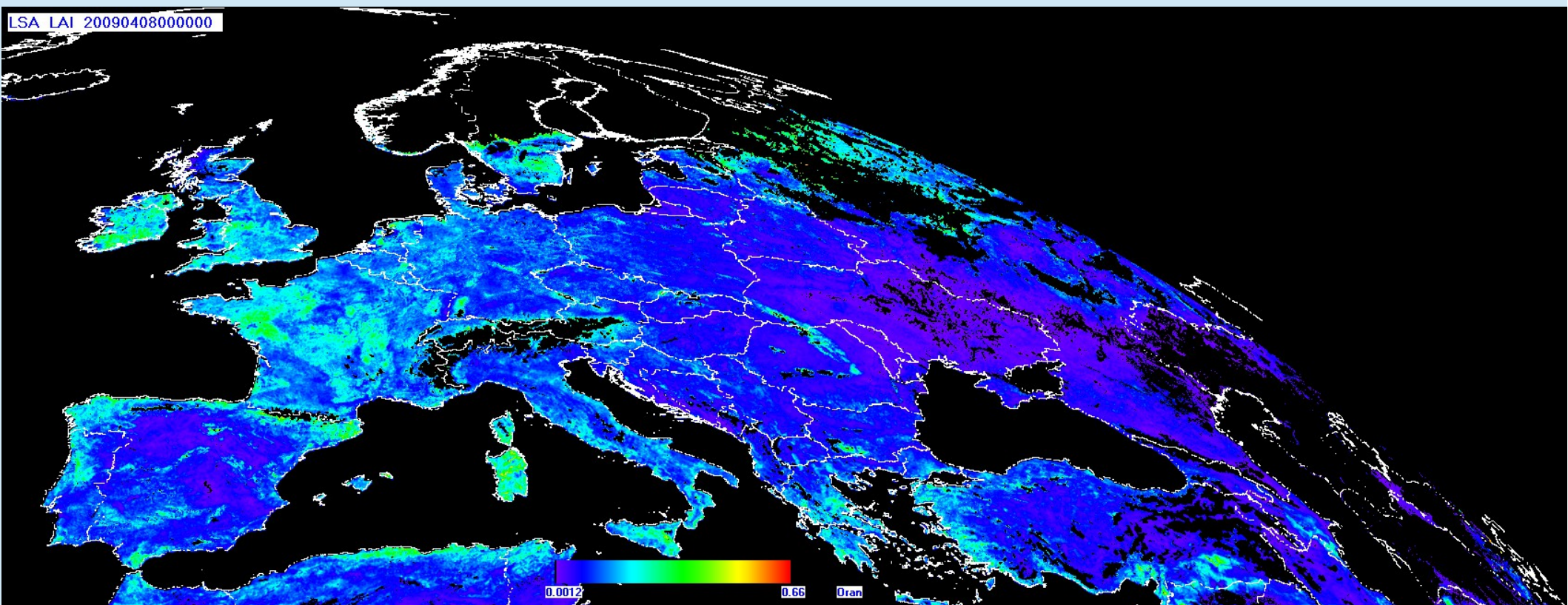
---



FVC product output as .png file

# Past Studies in TSMS for LSASAF products

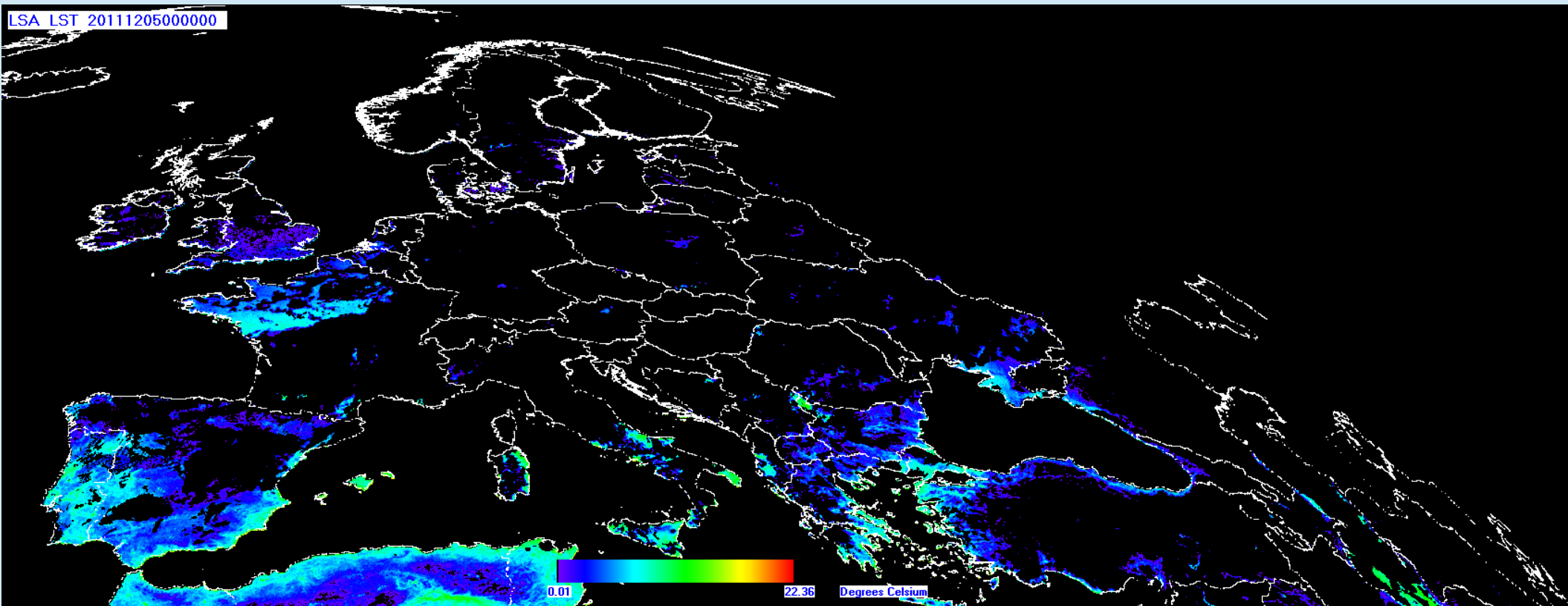
---



LAI product output as .png file

# Past Studies in TSMS for LSASAF products

---



LST product output as .png file

# Past Studies in TSMS for LSASAF products

---

Thank you...