



Useful information for participants

HOTEL INFORMATION	2
LOGISTIC INFORMATION	2
Public transport tickets	2
Getting from the airport to the hotel	3
Getting from Riga International Bus station to the hotel	5
Getting from the hotel to the dinner	8



HOTEL INFORMATION



AC HOTEL BY MARRIOTT RIGA

(ex. Albert Hotel)

Dzirnavu street 33

web: [Hotel in the Quiet City Centre of Riga | AC Hotel Riga](#)

Course classes will be held in the hotel, in the conference room.

Breakfast is included.

LOGISTIC INFORMATION

If you don't need help with logistics and plan to use online maps, just read significant notes (!!!) in blue boxes – there is information about public transport tickets and about changes in the location of public transport bus stops.

Public transport tickets

Buy bus ticket in the airport or Riga center:

- from the bus driver – **only for bus N. 22** (from/to the airport)
- using the ticket machine
- in the shop/kiosk Narvesen, near the taxi stop, on the left side from Arrival exit E.
- online – more about it here: [Code tickets \(rigassatiksm.lv\)](#)



Ticket types and prices (valid for bus, minibus, tram and trolleybus):

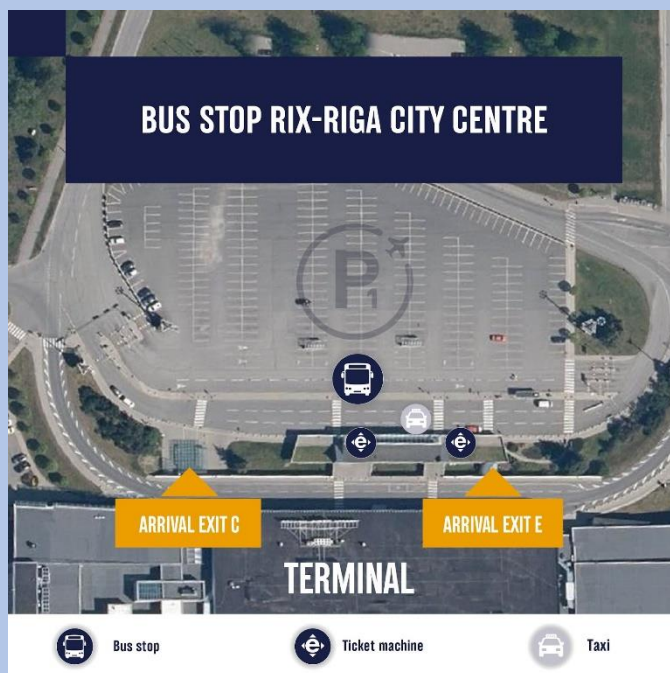
One 90-minute ticket – 1.50 EUR (from the driver on bus N. 22 – 2.00 EUR)

24-hours ticket – 5.00 EUR

3-day ticket – 8.00 EUR

5-day ticket – 10.00 EUR

Additional information: [Types of e-tickets \(rigassatiksm.lv\)](#)



Getting from the airport to the hotel

1. Taxi - the easiest way to go to the hotel

Pick up a taxi car near the bus stop or use other taxi services by app, e.g., **Bolt** or **Forus** (15-20 EUR*), which might be cheaper than a taxi at the airport.

*price can be higher due to weather, traffic, or amount of requests

2. Public transport - the optimal way to go to the hotel

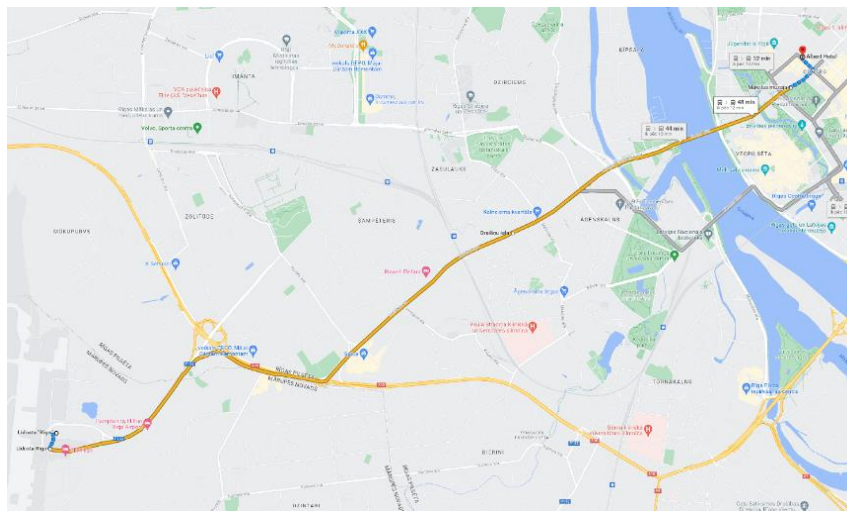
1st option:

Use bus N. 22, go 6 stops, and change to bus N. 53 at bus stop *Dreiliņu iela*, go 5 stops more and get off at bus stop *Mākslas muzejs*.

The hotel is only 500m away!



Go forward (300m), turn left on the second crossroad to Dzirnavu street and continue straight (180m) - the hotel will be on the right side.





2nd option:

Use bus N. 22, go 8 stops and get off at bus stop *Slokas iela*. Have a 1-2 min walk to stop *Valsts arhīvs* and use trolleybus N. 5 or N. 25 and:

- go 3 stops more, get off on *Mākslas muzejs*.

The hotel is only 500m away!

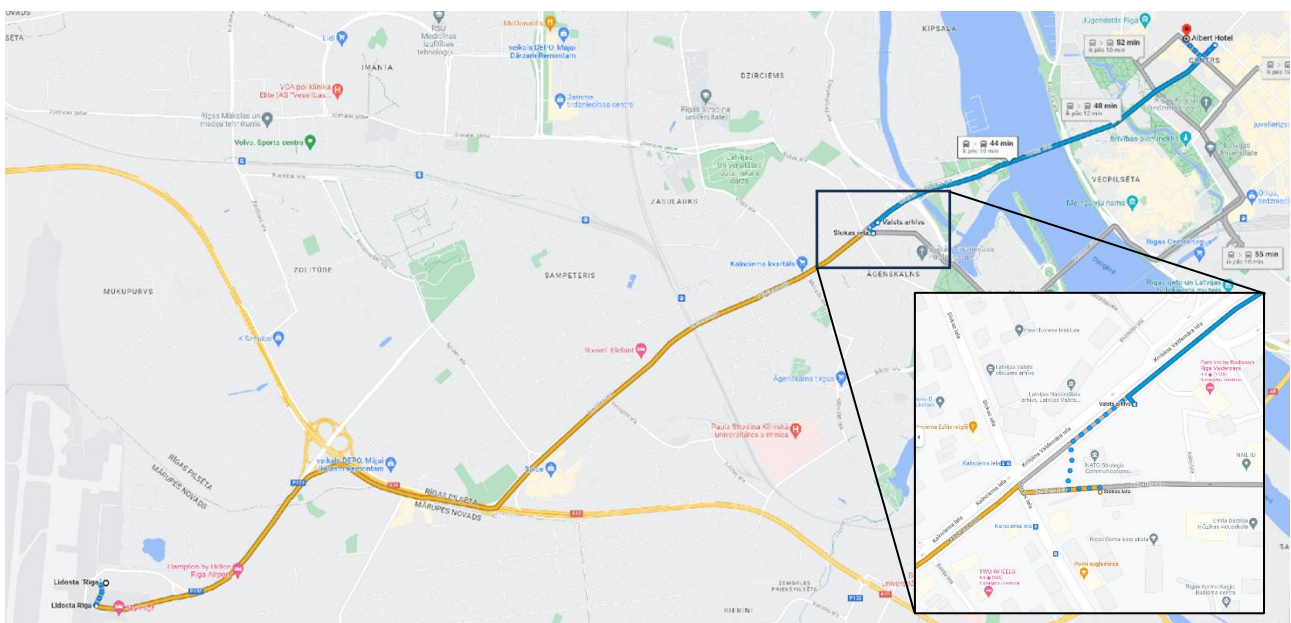
Go forward (300m) and turn left on the second crossroad to Dzirnavu street, continue straight (180m) - hotel will be on the right side.

or

- go 4 stops more, get off on *Lāčplēša iela*.

The hotel is only 300m away!

Go back (130m), turn to the right to Dzirnavu street, continue straight (180m) - the hotel will be on the right side.



These are the shortest, easiest and fastest routes by public transport, approx. 40 min.
More options can be found in Google maps.



We do not recommend you change buses at the bus stop *Centrālais tirgus* or *Centrālā stacija* (one of the possible routes Google Maps can provide you) if you are going from the airport and other routes exist – there are big construction works near Central Market, bus stops can be moved 150m away from regular places (it is not shown on GoogleMaps), and it can be difficult to go there with luggage.

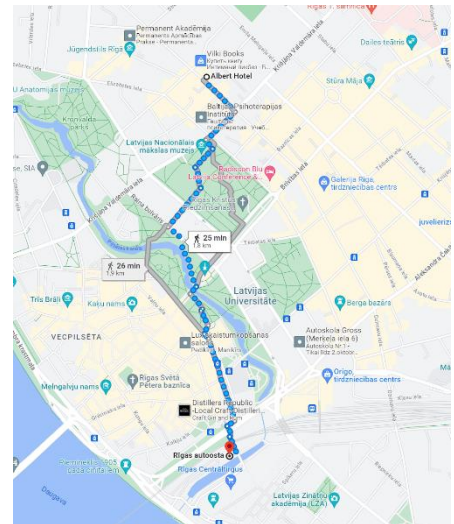


Getting from Riga International Bus station to the hotel

There are big construction works near the International Bus station, but no impact on your exit from it.

If you don't have a big suitcase, the weather is fine and you want to do some sightseeing – take a 30-minute walk to the hotel!

Go left along the tram tracks, cross the road by the underground passage, and continue straight, through the parks. More detailed – on the map.



1. Taxi - the easiest way to go to the hotel

Pick up a taxi car near the Bus station or use other taxi services by app, e.g., **Bolt** or **Forus** (5-10 EUR*), which might be cheaper than a taxi at the airport.

*price can be higher due to weather, traffic, or amount of requests

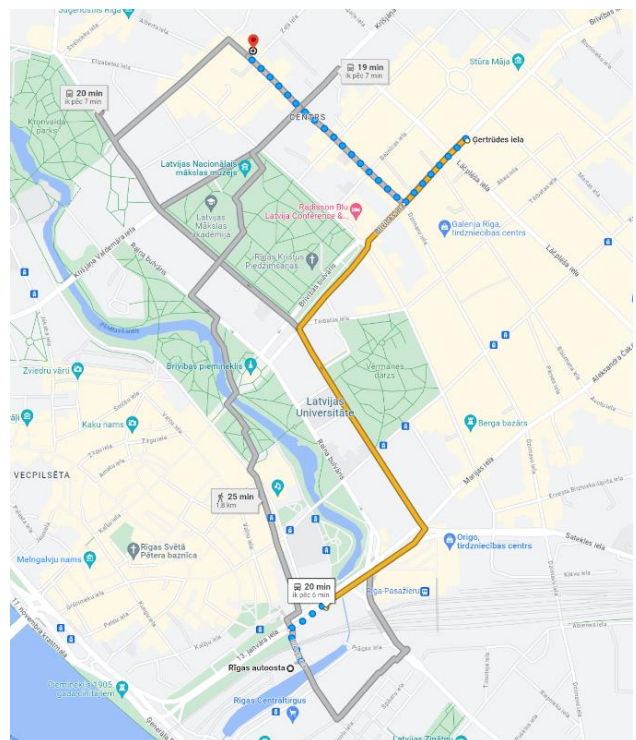
2. Public transport - the optimal way to go to the hotel

1st option:

Go left along the tram tracks (apr. 100m) from the Bus station, then turn right and go to the bus stop *Autoosta* (apr. 150 m). Use bus N. 3, N. 21, go 3 stops and get off at bus stop *Ģertrūdes iela*.

The hotel is 750m away!

Go back (230m), turn right to *Dzirnavu* street, and continue straight (500m) - the hotel will be on the right side.





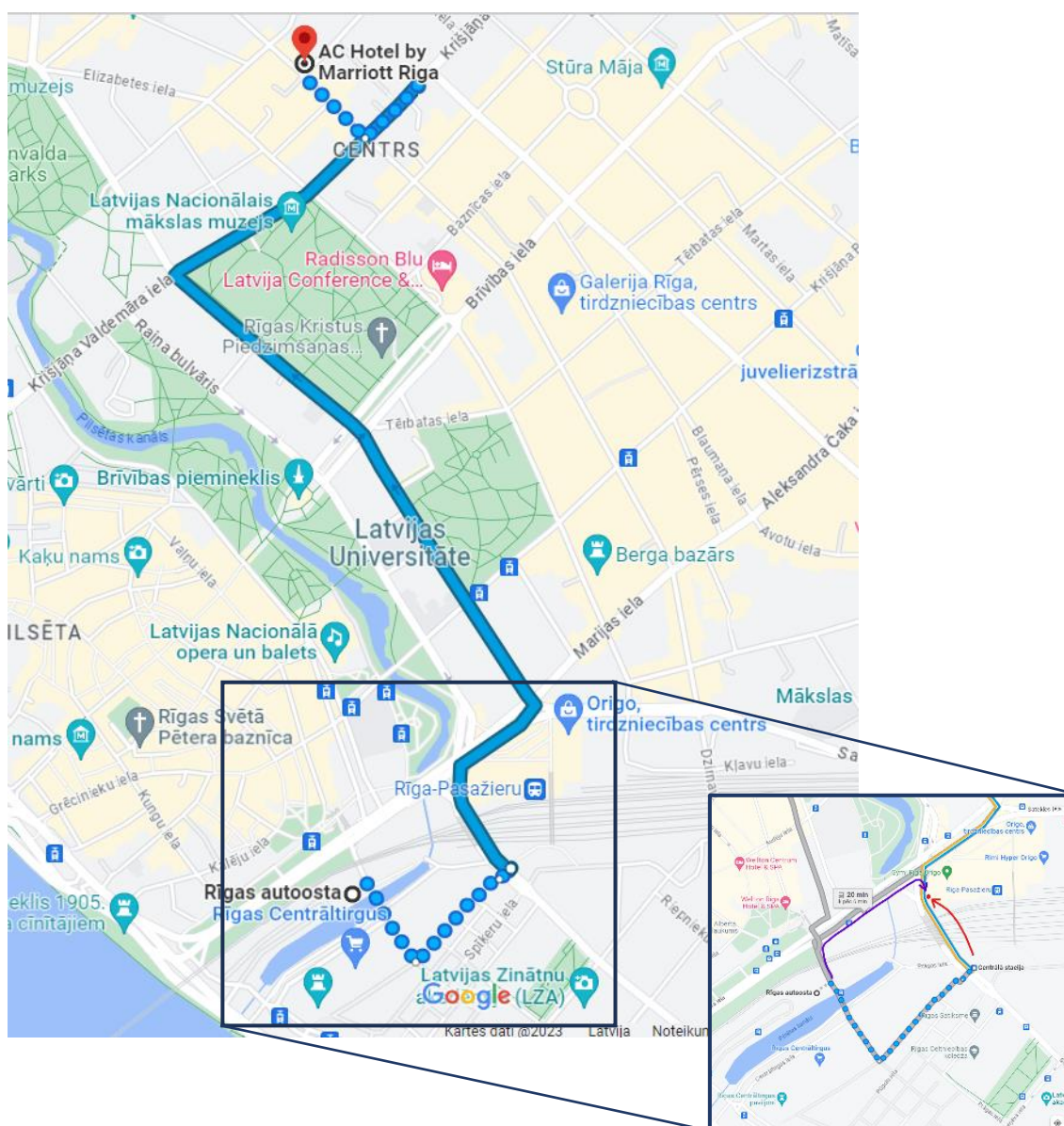
2nd option:

Go left along the tram tracks (apr. 100m) from the Bus station, then turn right and continue forward (180m), cross the road by the underground passage – keep the right side. Bus stop *Centālā stacija* is located near Hesburger Cafe (150 meters forward from its regular position - look (!!!) note below).

Use bus N. 11 or trolleybus N. 3, go 4 stops, and get off at bus stop *Lāčplēša iela*.

The hotel is only 300m away!

Go back (130m), turn to the right to Dzirnavu street, continue straight (180m) - the hotel will be on the right side.





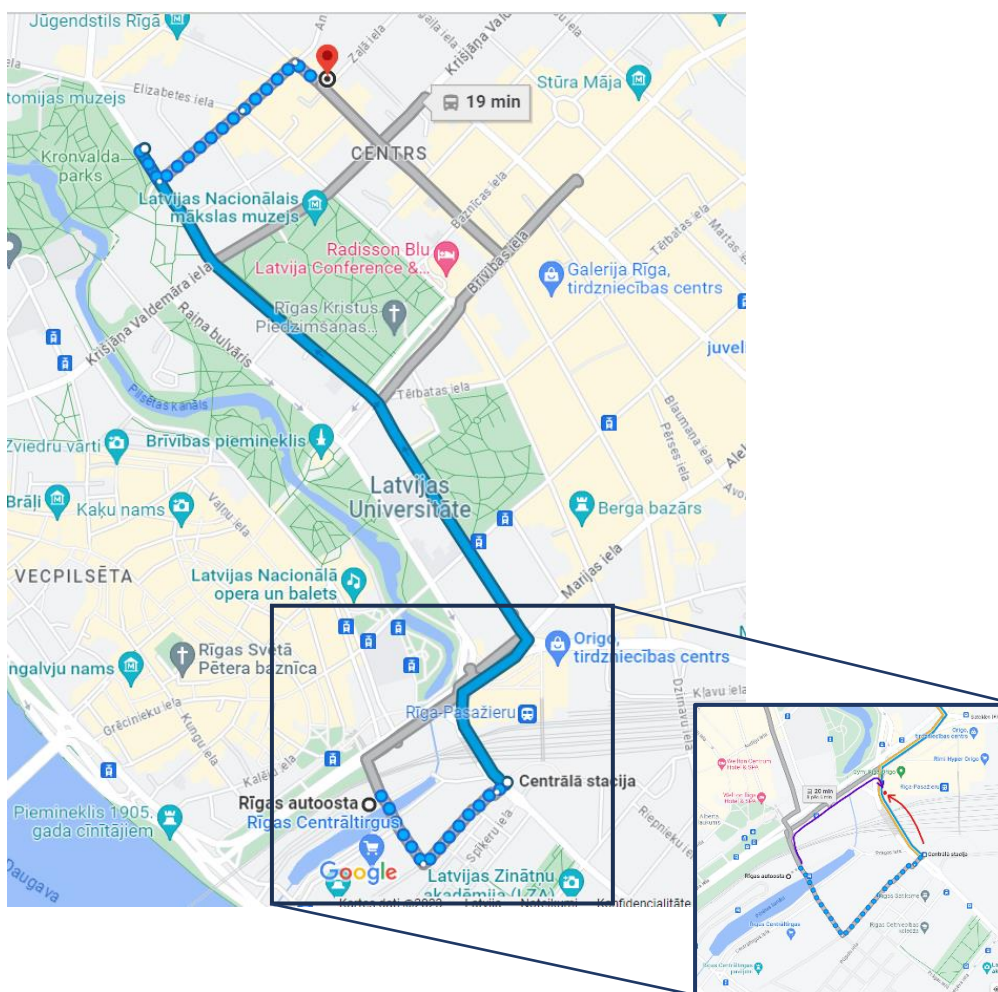
3rd option:

Go left along the tram tracks (apr. 100m) from the Bus station, then turn right and continue forward (180m), cross the road by the underground passage – keep the right side. Bus stop *Centālā stacija* is located near Hesburger Cafe (150 meters forward from its regular position - look (!)Note below).

Use bus N. 2 or N. 24 or trolleybus N. 19, go 3 stops, and get off at bus stop *Medicīnas muzejs*.

The hotel is 500m away!

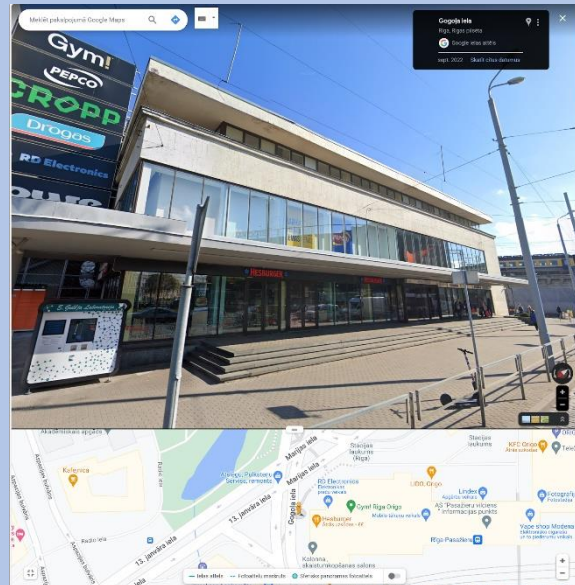
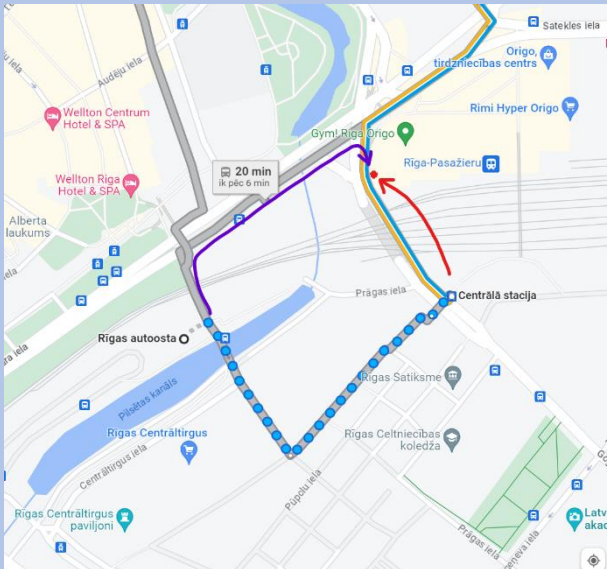
Go back (700m), turn to the left to Ukrainas Neatkarības street, continue straight (380m), and then turn right - the hotel will be on the left side.





If you use Google Maps, note that bus stop *Centrālā stacija* is located 150m forward, near the Hesburger cafe, shopping mall Origo. It is better to get there in the following way (purple arrow):

Go left along the tram tracks (apr. 100m) from the Bus station, then turn right and continue forward (180m), cross the road by the underground passage – keep the right side. Bus stop is located here:





Getting from the hotel to the dinner

On November 8 an **excursion and joint dinner** are planned.

The excursion will end at the dinner place *Sidrērija* (Peldu street 24).

If you want to go only to the dinner, it is possible to go on foot or do part of the route by public transport which will take the same amount of time (apr. 25 min).

If you choose to go by public transport and need help - contact us.

